

Olympic Region Update

PRTPO

February 16, 2024

Steve Roark, Olympic Region Administrator

Roger Millar, Secretary of Transportation
Mike Gribner, Deputy Secretary of Transportation

Steward of Multimodal System



- 3,000+ Lane miles
- 645 Bridges
- 7 Counties
- 48 Cities
- 13 Tribes
- 7 Transit Agencies
- 6 Ferry Terminals
- 1.8 million customers

US 101, Elwha River Bridge

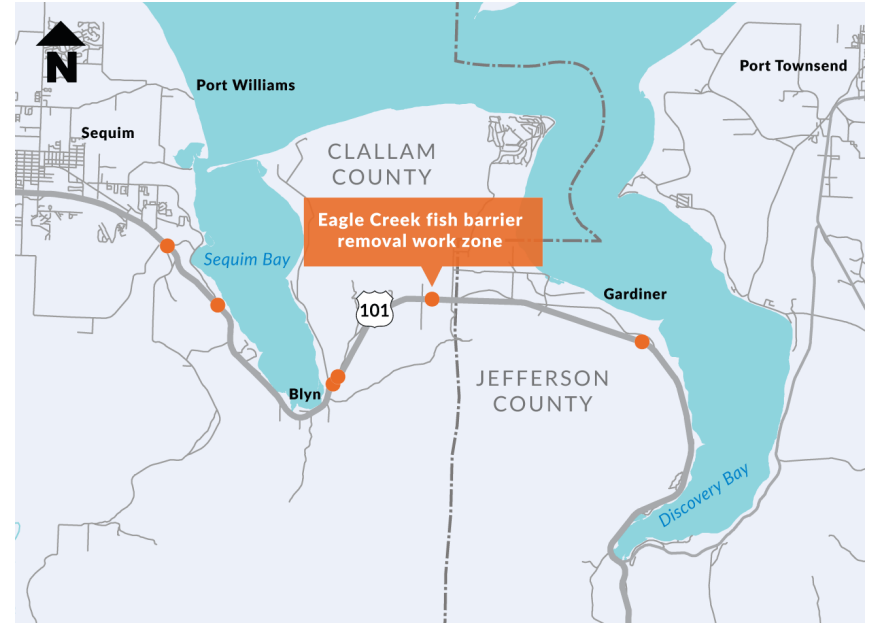


Eagle Creek under US 101

Before and after construction



Locations of culverts in project



SR 104, Hood Canal Bridge



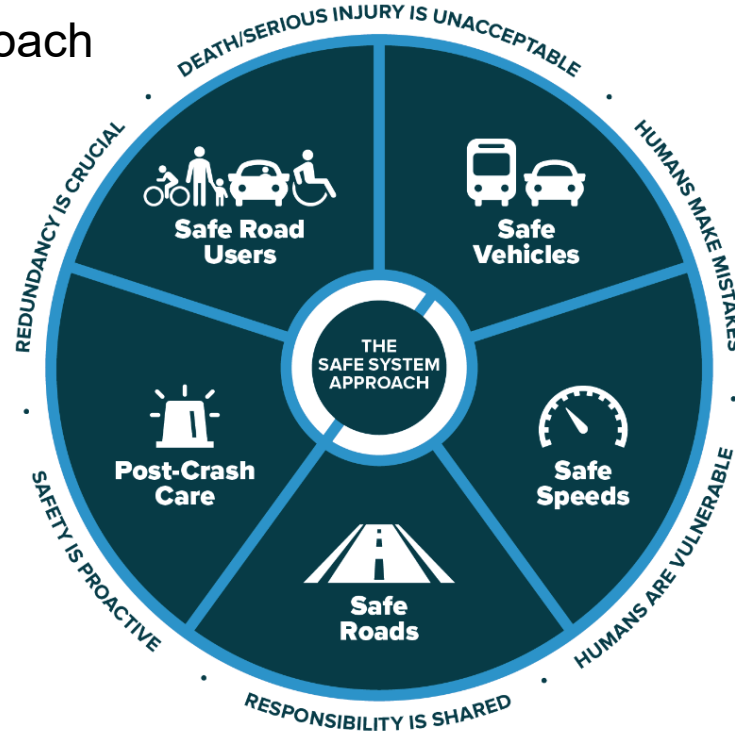
Safety & Preservation Emphasis

Transportation System Policy Goals (RCW 47.04.280)

- (1) ... Public investments in transportation should support achievement of these policy goals:
 - (a) **Preservation**: To maintain, preserve, and extend the life and utility of prior investments in transportation systems and services, including the state ferry system;
 - (b) **Safety**: To provide for and improve the safety and security of transportation customers and the transportation system;
 - (c) **Stewardship**: To continuously improve the quality, effectiveness, resilience, and efficiency of the transportation system;
 - (d) **Mobility**: To improve the predictable movement of goods and people throughout Washington state, including congestion relief and improved freight mobility;
 - (e) **Economic vitality**: To promote and develop transportation systems that stimulate, support, and enhance the movement of people and goods to ensure a prosperous economy; and
 - (f) **Environment**: To enhance Washington's quality of life through transportation investments that promote energy conservation, enhance healthy communities, and protect the environment.
- (2) The powers, duties, and functions of state transportation agencies must be performed in a manner consistent with the policy goals set forth in subsection (1) of this section **with preservation and safety being priorities.**

Safety, Preservation & Complete Streets

Safe Systems Approach



Safety, Preservation & Complete Streets



WALKING



ROLLING



BIKING



RIDING TRANSIT



DRIVING

The Complete Streets Requirements



Complete Streets principles are baked into our vision and values.

In accordance with RCW 47.04, every WSDOT project that is

1. Designed on or after July 1st, 2022,
2. Estimated to cost at least \$500,000, and
3. Located in a town, city, or similar population center will be specifically required to provide for the needs of people walking, biking, rolling, and taking transit

Any project that meets the three above criteria can be a Complete Streets project. In most cases, if WSDOT is doing a project in these areas, we will build comfortable places for people to walk, bike, roll, and cross the road.

When you won't see Complete Streets improvements on a WSDOT project

TOO SMALL

- Fixing a guardrail
- Installing a stop sign

RESTRICTED TO VEHICLES ONLY

- Repaving one lane on I-5

NOT IN A POPULATION CENTER

- Remote highways

In Step with Communities

There is no singular design prescription for a Complete Street. Each street is unique and responds to community context.

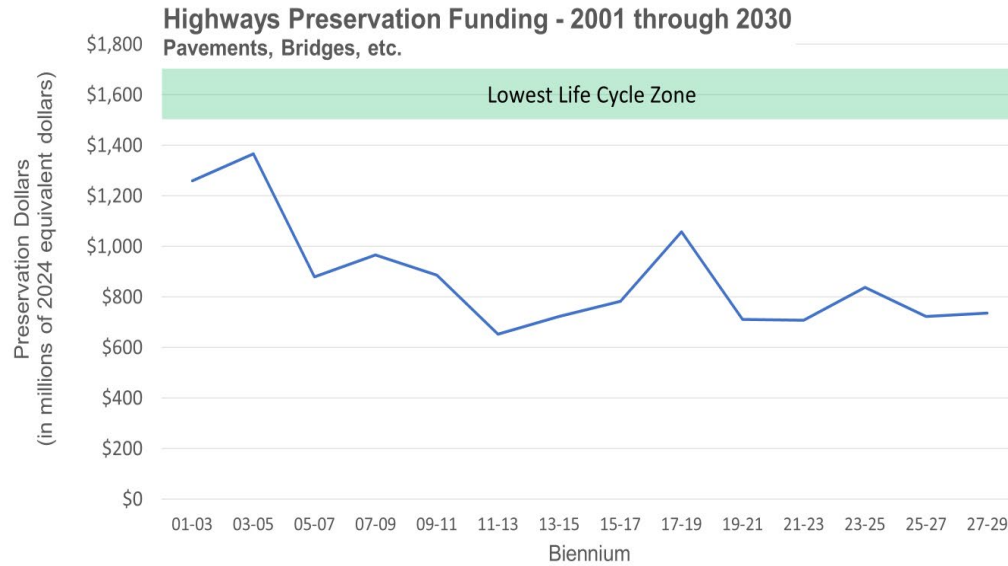
WSDOT will be working closely with communities to deliver Complete Streets improvements that reflect local context and meet local needs.



What is your vision for turning your community's state highway into a Complete Street?

Safety, Preservation & Complete Streets

Preservation Investment



Statewide:

- Preservation funding is currently addressing 40% of need.

Peninsula Counties:

- Backlog of 58 Preservation Projects.

US 101 Complete Streets Pre-Design

US 101 Kolonels to Shore Road

- 40 – 55 MPH speeds
- 14 transit stops



Current Strategies

- Kolonel's Way Intersection improvements
- Old Olympic Highway 2-lane roundabout

Future Strategies

- Kolonel's Way 2-lane roundabout
- N Masters Road 2-lane roundabout

US 101 Complete Streets Pre-Design

US 101 Kitchen-Dick to Simdars Road

- 45 – 55 MPH speeds
- 10 transit stops on US 101



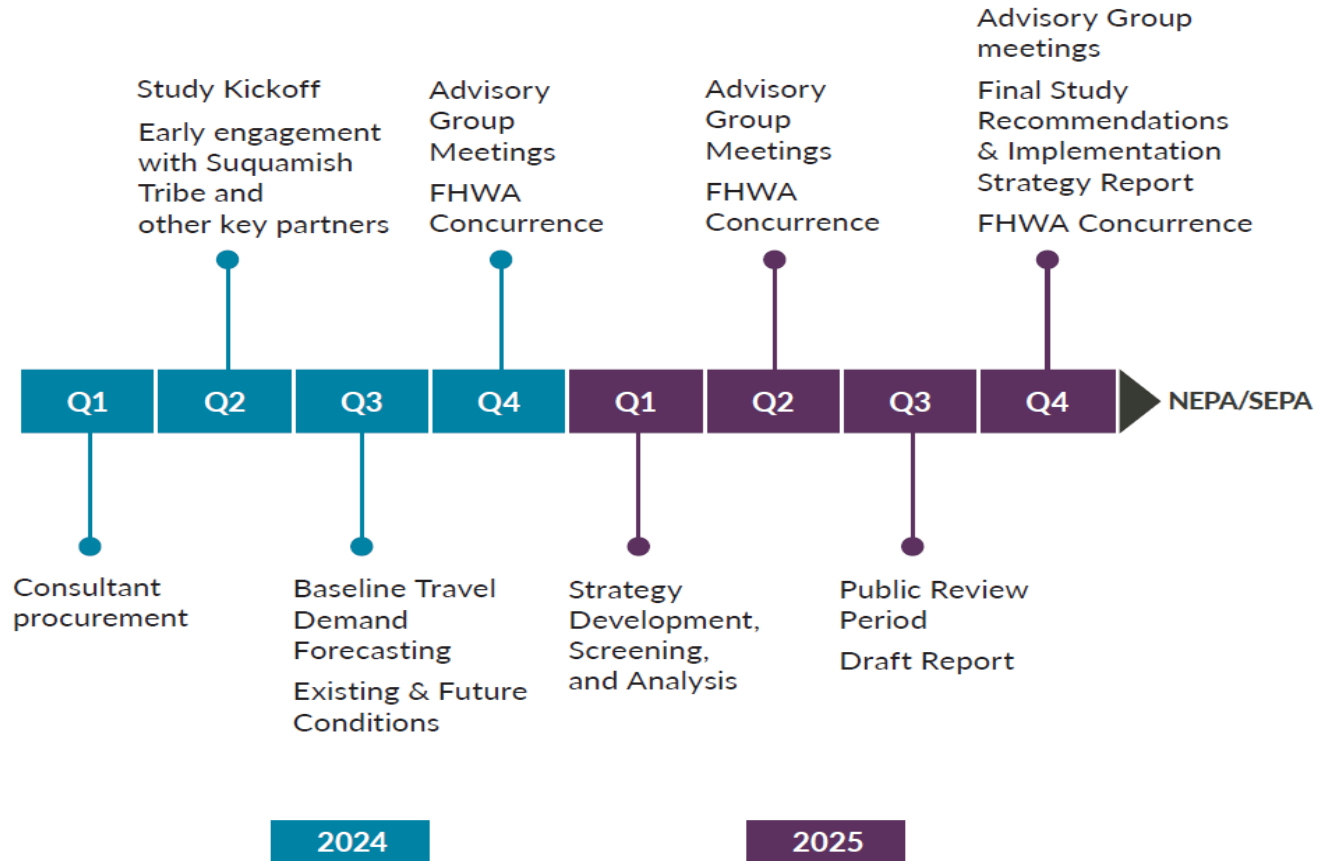
Current Strategies

- Intersection improvements at Carlsborg and Mill Roads
- Taylor Cut-off Road two-lane roundabout
- Ramps intersection improvements at River Road and Sequim Avenue

Future Strategies

- Two-lane roundabouts at Boyce and Carlsborg Road intersections
- Carlsborg area separated shared-use path
- Sequim/Carlsborg connection shared-use path

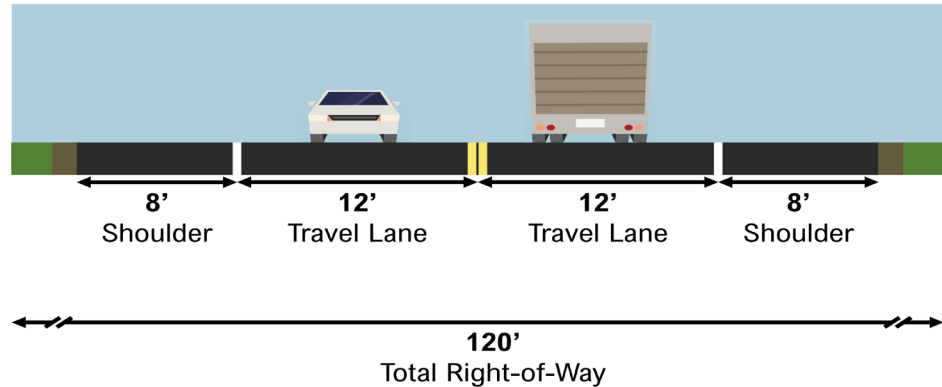
SR 3, Gorst PEL – Key Milestones



SR 3 Freight Corridor



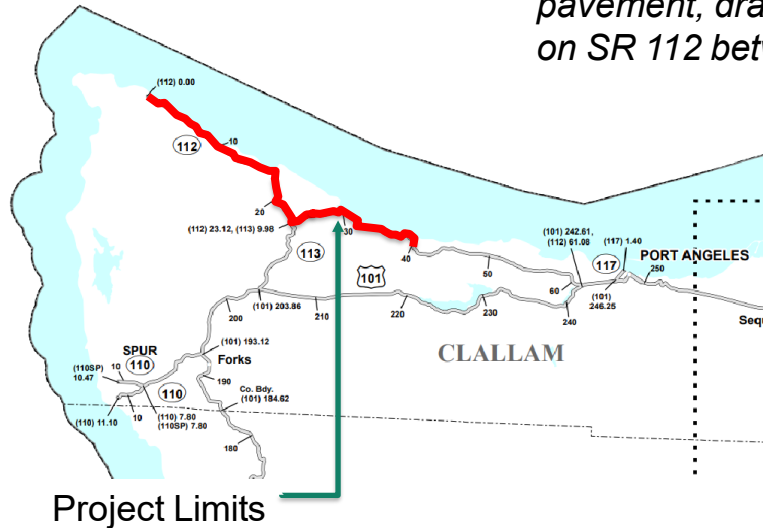
- Provides an alternative for highway users to travel around and not through Belfair.



SR 112 Preservation and Maintenance

Project Description:

Preservation and maintenance project to address pavement, drainage, and roadside safety hardware needs on SR 112 between MP 0.0 and 42.0.



US 101, Simdars Bypass

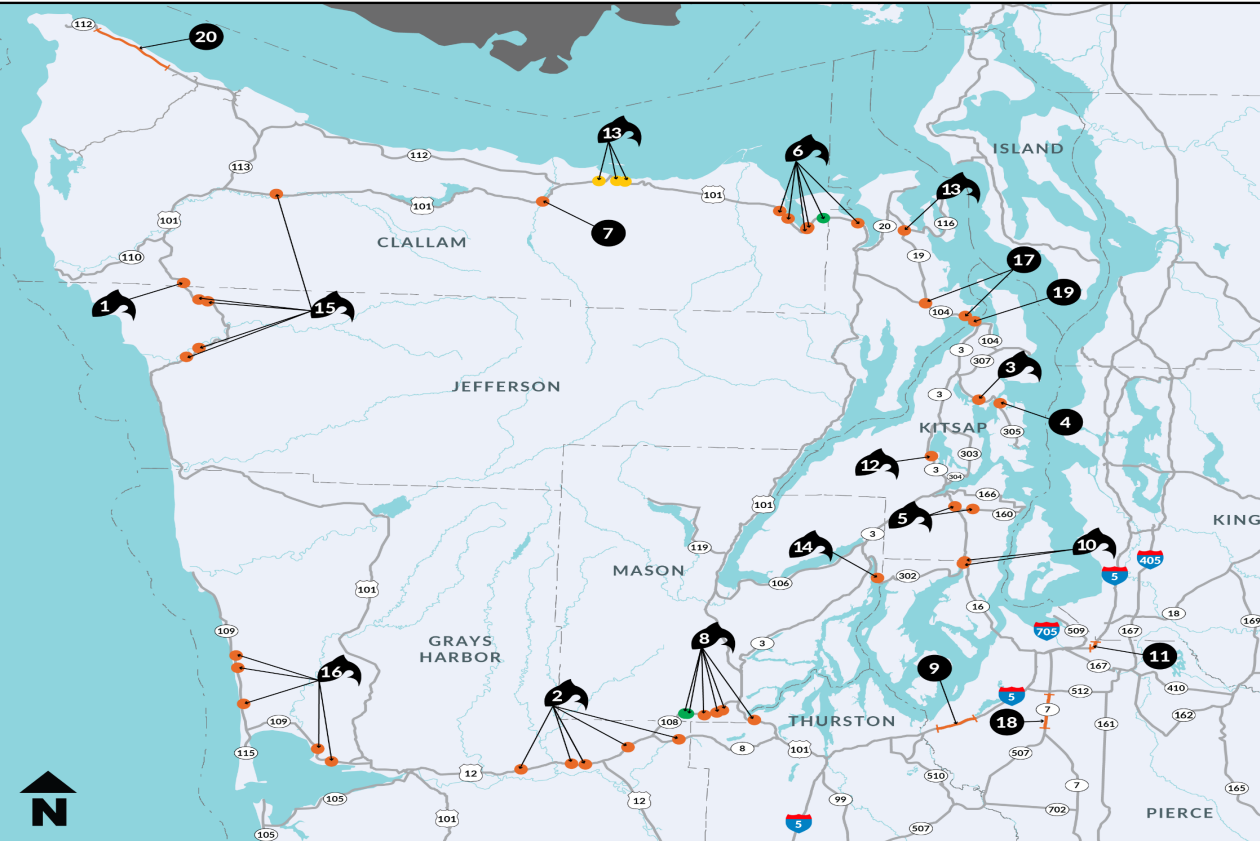


SR 104, Paradise Bay & SR 19 Intersections



Olympic Region 2024 Construction Projects

Timing subject to change



- 1 🐟 US 101/May Creek in Vic of Dowans Creek Rd – Remove Fish Barrier
- 2 🐟 US 12/SR 8/Grays Harbor County Fish Passage Barriers – Remove Fish Barriers
- 3 🐟 SR 305/Sam Snyder Creek – Remove Fish Barrier
- 4 🐟 SR 305/Port Madison, Agatewood Rd, Adas Will Ln – Safety Improvements
- 5 🐟 SR 16/SR 160/Kitsap County Fish Passage Barriers – Remove Fish Barriers
- 6 🐟 US 101 Jefferson and Clallam Counties Fish Barriers – Remove Fish Barriers
- 7 🐟 US 101 Elwha River Bridge – Bridge Replacement
- 8 🐟 SR 108/US 101/Mason and Thurston Co Fish Barriers – Remove Fish Barriers
- 9 🐟 I-5 Mounts Rd to Steilacoom-DuPont Rd – Corridor Improvements
- 10 🐟 SR 16 and SR 302 (Spur) Purdy Creek – Remove Fish Barriers and Paving
- 11 🐟 SR 167/I-5 to SR 509 – Stage 1B
- 12 🐟 SR 3 – Chico Creek and Chico Way Bridge Vicinity – Remove Fish Barriers
- 13 🐟 US 101 & SR 116 North Olympic Peninsula – Remove Fish Barriers
- 14 🐟 SR 302/Victor Creek – Remove Fish Barrier
- 15 🐟 US 101/Northwest US 101 – Remove Fish Barriers
- 16 🐟 SR 109/Hoquiam to Ocean City – Remove Fish Barriers
- 17 🐟 SR 104/Paradise Bay-Shine Road & SR 19 – Safety Improvements
- 18 🐟 SR 7/Pacific Highway Crossing and Signalization
- 19 🐟 SR 104/Hood Canal Bridge – Centerlock Rehabilitation
- 20 🐟 SR 112/Preservation and Maintenance

Not all locations will be under construction in 2024, and some will carry into 2025. See project webpages for additional information.
<https://wsdot.wa.gov/construction-planning>

MAP KEY:

- 🐟 Construction
- 🟠 Active Construction
- 🐟 Fish Passage
- 🟢 Completed Construction
-
- 🟡 2025 Construction

Olympic Region Update

Discussion

Steve Roark, Olympic Region Administrator
Steve.Roark@wsdot.wa.gov