

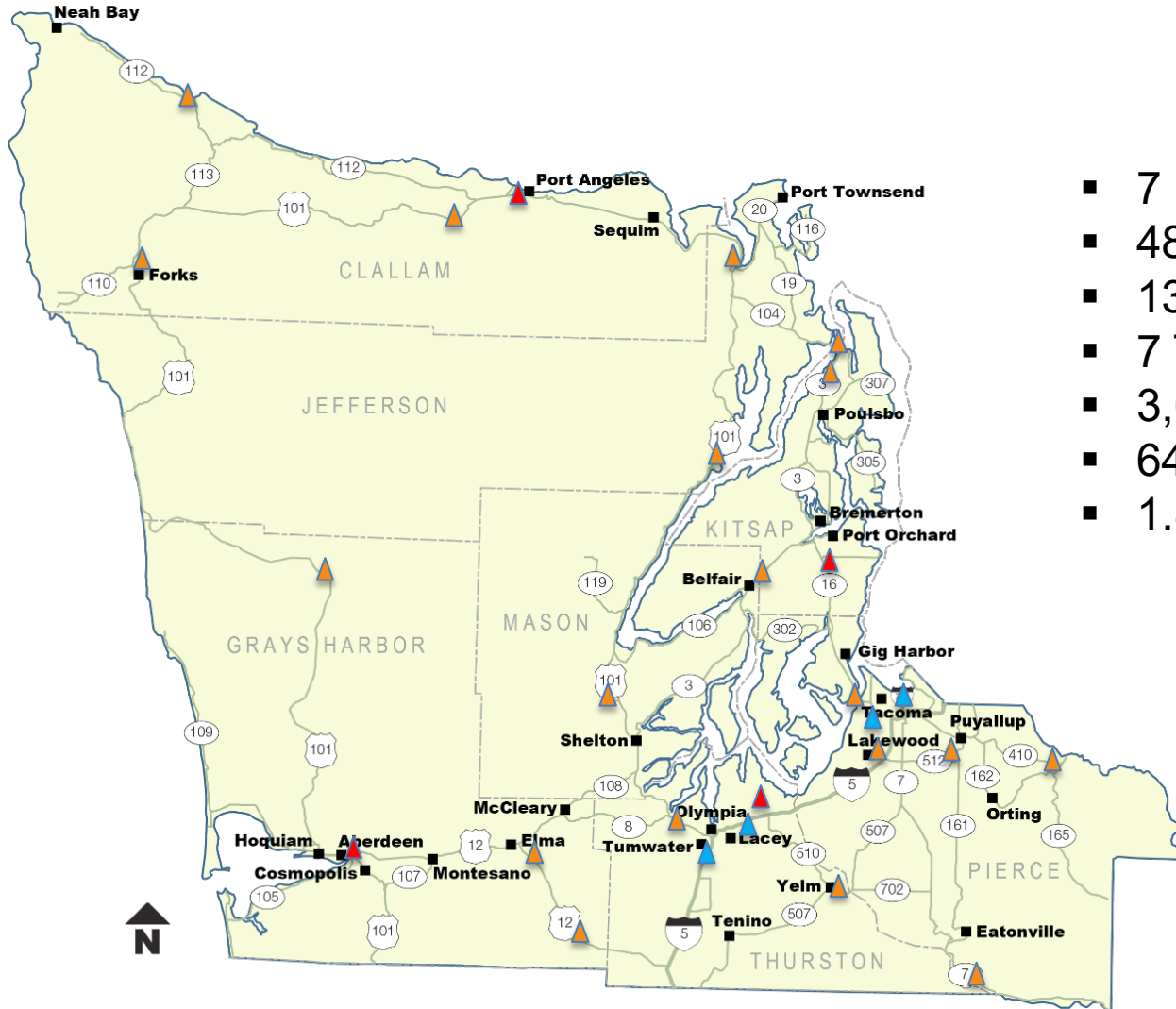
Olympic Region Update

Peninsula Regional Transportation Planning Organization
February 17, 2023

Steve Roark, Olympic Region Administrator

Roger Millar, Secretary of Transportation
Amy Scarton, Deputy Secretary of Transportation

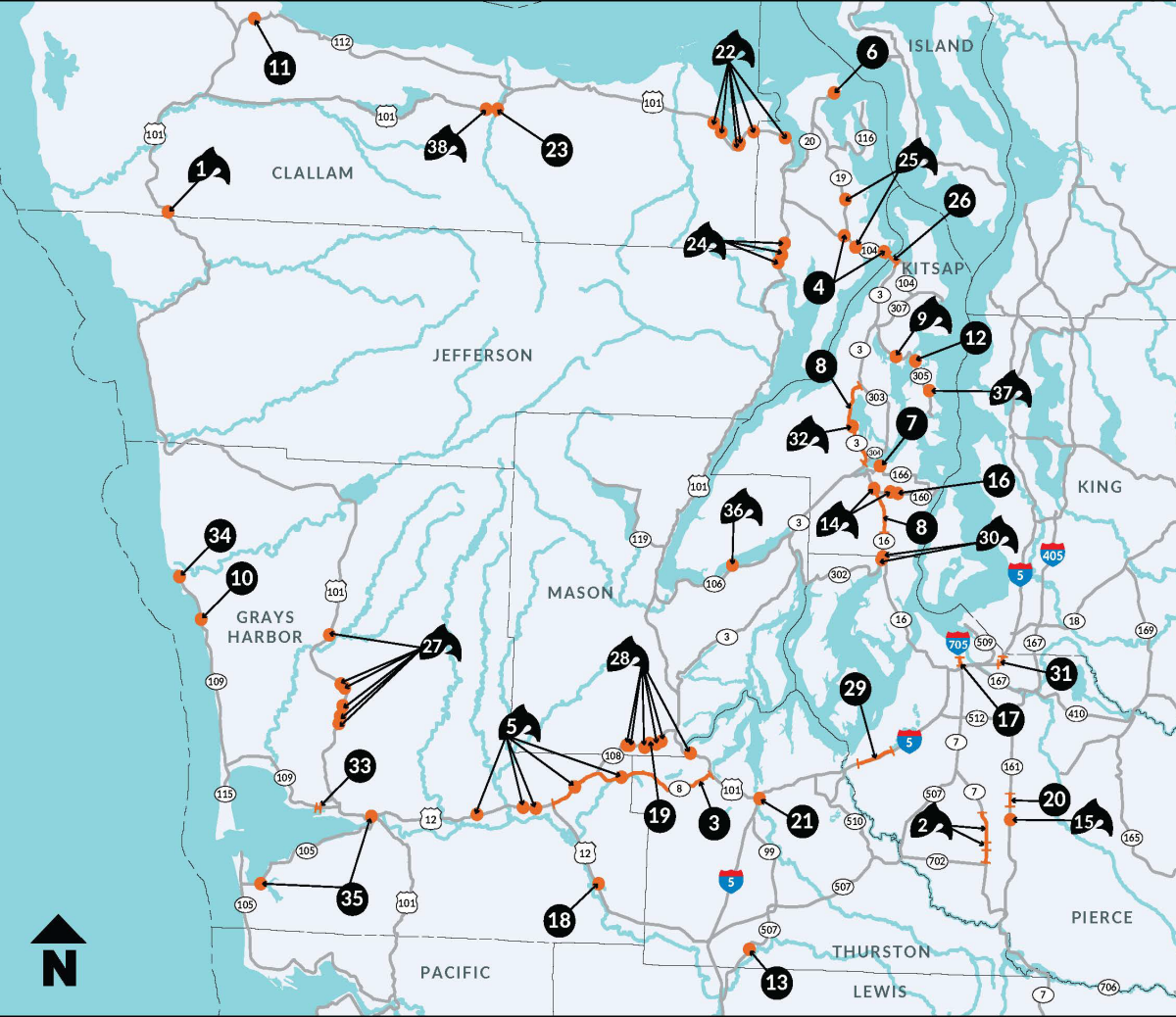
Olympic Region



- 7 Counties
- 48 Cities
- 13 Tribes
- 7 Transit Agencies
- 3,000+ Lane miles
- 645+ Bridges
- 1.8 Million Customers

Olympic Region 2023 Construction Projects

Timing subject to change



MAP KEY: ● Construction
 🐟 Fish Passage

NOT SHOWN ON MAP:

- 39 Region Wide Safety Features - Signing
- 40 Region Wide Pavement Preservation
- 41 Region Wide Crack Sealing
- 42 Region Wide Breakaway Cable Terminal Replacement - Guardrail

- 1 US 101/May Creek in Vic of Dowans Creek Rd - Remove Fish Barrier
- 2 SR 7/South Creek - Remove Fish Barriers & Paving
- 3 SR 8/US 12 to US 101 - Paving
- 4 SR 104/SR 19 & Paradise Bay - Shine Rd Roundabouts
- 5 US 12/SR 8/Grays Harbor County Fish Passage Barriers - Remove Fish Barriers
- 6 SR 20/Kearney St I/S - Roundabout
- 7 SR 166/Bethel/Bay/Maple Intersection - Roundabout
- 8 SR 3 & SR 16 - Paving
- 9 SR 305/Sam Snyder Creek - Remove Fish Barrier
- 10 SR 109/N of Moclips Highway - Stabilize Slope
- 11 SR 112/Pysht River - Emergency Repairs
- 12 SR 305/Port Madison, Agatewood Rd, Adas Will Ln - Safety Improvements
- 13 SR 507/N of Connor Rd - Culvert Replacement
- 14 SR 16/SR 160/Kitsap County Fish Passage Barriers - Remove Fish Barriers
- 15 SR 161/Unnamed Tributary to South Creek - Remove Fish Barrier
- 16 SR 160/Long Lake Rd SE - Roundabout
- 17 I-705/I-5 to Pacific Ave - Expansion Joint Replacement Stage 3
- 18 US 12/Cedar Creek Bridge - Scour Repair
- 19 SR 108/S of Eich Rd - Culvert Replacement
- 20 SR 161/Graham Hill - Safety and Mobility Improvements
- 21 I-5/Capitol Lake Bridge - Expansion Joint and Gutter System Repair
- 22 US 101 Jefferson and Clallam Counties Fish Barriers - Remove Fish Barriers
- 23 US 101 Elwha River Bridge - Bridge Replacement
- 24 US 101 - Leland Creek and Unnamed Tribs - Remove Fish Barriers
- 25 SR 19/SR 104 East Jefferson County - Remove Fish Barriers
- 26 SR 104 - Hood Canal Bridge - Center Lock Rehabilitation
- 27 US 101 - Northwest US 101 - Remove Fish Barriers
- 28 SR 108/US 101/Mason and Thurston Co Fish Barriers - Remove Fish Barriers
- 29 I-5 Mounts Rd to Steilacoom-DuPont Rd - Corridor Improvements
- 30 SR 16 and SR 302 (Spur) Purdy Creek - Remove Fish Barriers and Paving
- 31 SR 167/I-5 to SR 509 - Stage 1B
- 32 SR 3 - Chico Creek and Chico Way Bridge Vicinity - Remove Fish Barriers
- 33 SR 109 W of Hoquiam - Stabilize Slope
- 34 SR 109 - Slope Slide - Emergency Repair
- 35 US 101/SR 105/SR 105 Spur Aberdeen/Westport - Signals and ADA
- 36 SR 106 - Twanoh Creek - Remove Fish Barrier
- 37 SR 305 - Murden Creek - Remove Fish Barrier
- 38 US 101 - Indian Creek - Remove Fish Barrier

North Peninsula Construction



JANUARY 2023

US 101, SR 104, SR 20, SR 19 Construction

NORTH OLYMPIC PENINSULA 2023 TO 2025

Maintaining Infrastructure, Improving Public Safety, and the Environment

US 101 and State Routes 104, 20 and 19 serve residents, businesses, and visitors to the Olympic Peninsula. The peninsula's ecological diversity, from shorelines to mountain tops, attracts people from around the world to live, work and recreate in the region. These highways connect Olympic Peninsula communities to each other and other areas of Puget Sound, making way for the movement of goods and services across western Washington.

In spring 2023, we will begin needed projects across the north coast of the Olympic peninsula. Construction projects will affect the flow of traffic on sections of US 101 from Port Angeles and Sequim to Discovery Bay and south of the SR 104 interchange. At the same time, more construction and preservation projects will occur elsewhere on the peninsula, including on the Hood Canal Bridge.

This work is necessary to maintain the movement of people and goods across the peninsula and Hood Canal. The work is also vital for a healthy environment for salmon and orcas.

The work is needed to:

- Keep the transportation system in a state of good repair
- Improve the resiliency of our highways
- Reduce the potential for collisions
- Keep the Hood Canal Bridge operational
- Connect habitat for fish and wildlife across highways



Expect traffic back-ups and delays between Sequim and the Hood Canal Bridge

Nearly a dozen projects of varying size will affect travel. Our contractors and crews will close shoulders, shift travel lanes, implement one-way alternating traffic and possibly require detours. Heavy construction is expected each construction season, summer to fall, through 2025. Some projects will start and finish in 2023, while others will begin in 2024. Stay up to date on construction schedules with the WSDOT website or sign up for emails.



Project Spotlight: SR 104 Hood Canal Bridge Centerlock Repair Coming in 2023

The State Route 104 Hood Canal Bridge is truly unique. There are no others like it in the world. Built to withstand strong winds, big waves, and powerful tides, this bridge serves 18,000 vehicles per day in a salty, corrosive environment. Federal law requires that the bridge must yield to mariners. That means it must be able to retract its massive draw span at any time. Moving electrical and hydraulic systems work together to make it all happen. Repairs on two key elements of the bridge are scheduled in Summer 2023. The elements needing repair help guide the draw spans together and keep the draw spans closed.



To make the repairs, the bridge will close to all land traffic for up to four weekends. There are up to 14 nights where there will be intermittent closures to traffic.

Know Before You Go

These projects will cause more travel delays than travelers typically see on the Olympic Peninsula. We encourage travelers to plan ahead, check traffic conditions before hitting the road, and travel during non-peak periods as much as possible.

Stay Informed:

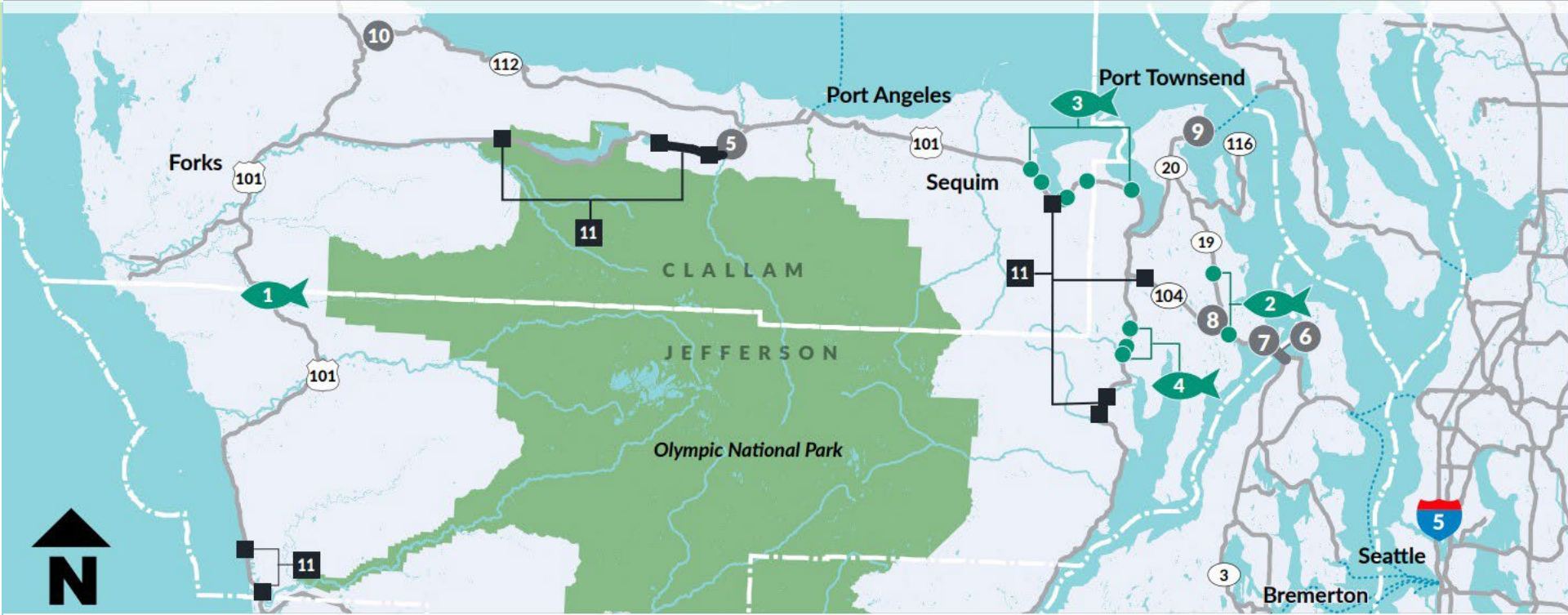
- [Project webpages](#)
- [WSDOT Statewide Travel Map](#)
- WSDOT App
- Twitter
- Facebook
- [GovDelivery email subscriptions](#)
- Highway Advisory Radio
- Call: 5-1-1

Project contact:

Steve Roark
Region Administrator

MaryLou Shannon
Assistant Region Administrator – Construction

360-357-2659



What can travelers expect?

All fish barrier removal projects use a mixture of around-the-clock lane closures, shifted lanes and alternating one-lane traffic around the work zones, reduced speed limits and detours. Please refer to project web pages for specific details.

- 1 Remove Fish Barrier
[US 101 May Creek in Vic of Dowans Creek Rd](#)
- 2 Remove Fish Barriers
[East Jefferson County](#)

- 3 Remove Fish Barriers
[US 101 Jefferson and Clallam Counties](#)

- 4 Remove Fish Barriers
[US 101 – Leland Creek and Unnamed Tribs](#)

- 5 Bridge Replacement
[US 101 Elwha River Bridge](#)
What can travelers expect?
Approximate two-week closure at end of project to connect travel lanes to new bridge. Detour will be in place using SR 112, SR 113 and Little River Road.

- 6 Bridge Repair
[SR 104 – Hood Canal Bridge – Center Lock Rehabilitation](#)

What can travelers expect:
The bridge will close to all traffic for up to four weekends. There are up to 14 nights where there will be intermittent closures to traffic.

- 7 Roundabout
[SR 104 – Paradise Bay – Shine Road – Safety Improvement](#)

What can travelers expect:
Shifted lanes around the work zone and intermittent lane closures. Crews will maintain one lane in each direction as much as possible. Short-term closure of SR 104 access from Shine Road for approximately two weeks.

- 8 Roundabout
[SR 104 – SR 19 – Safety Improvements](#)

What can travelers expect:
Shifted lanes around the work zone, temporary lane closures

- 9 Roundabout
[SR 20/Kearney St Intersection](#)

What can travelers expect:
Temporary detours lasting a few weeks each around the work zone.

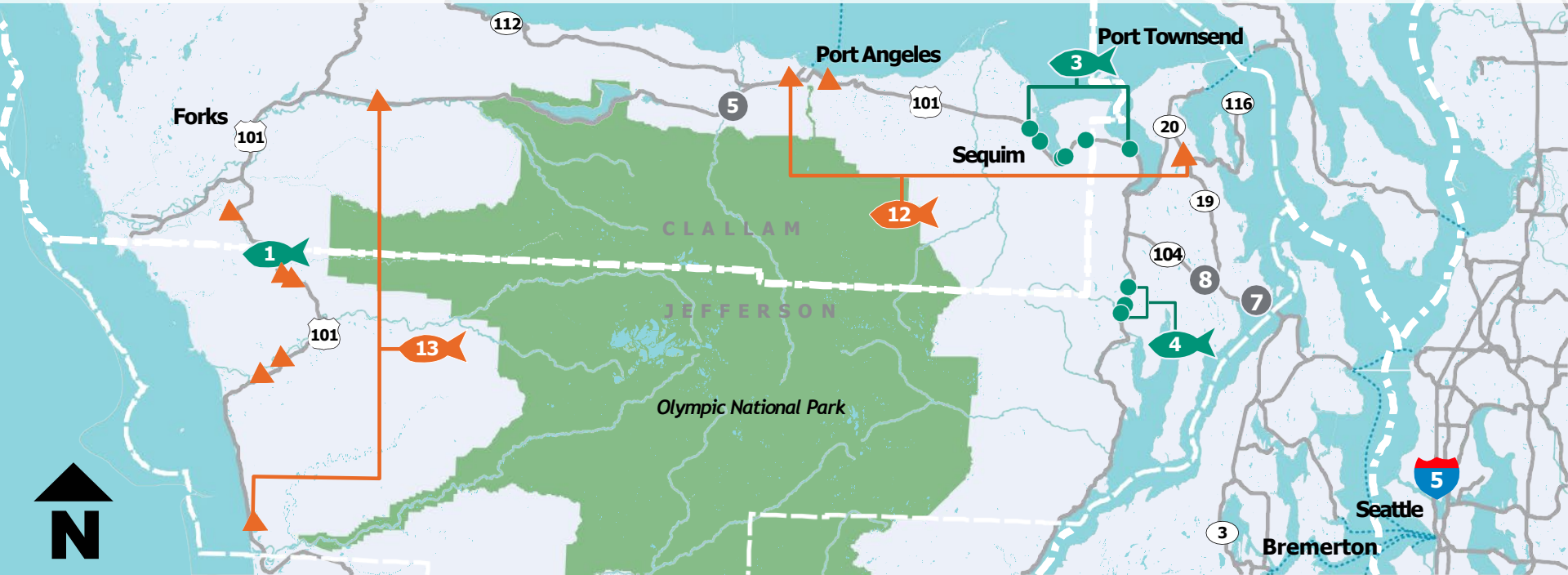
- 10 Emergency Repairs
SR 112 Pysht River

What can travelers expect:
Single lane closures causing a backup of less than 15 minutes over several weeks.

11 MAINTENANCE AND PRESERVATION

In addition to the listed projects, WSDOT has roadway preservation activities planned for summer 2023.

What can travelers expect:
Single lane closures and alternating one-lane traffic during daytime hours on US 101 and SR 104. Travelers will see delays.



PROJECTS CONTINUING FROM 2023

- 1** Remove Fish Barrier US 101 May Creek in Vic of Dowans Creek Rd
- 3** Remove Fish Barriers US 101 Jefferson and Clallam Counties
- 4** Remove Fish Barriers US 101 – Leland Creek and Unnamed Tribs
- 5** Bridge Replacement
US 101 Elwha River Bridge
- 7** Roundabout
SR 104 – Paradise Bay – Shine Road – Safety Improvement
- 8** Roundabout
SR 104 – SR 19 – Safety Improvements

PROJECTS STARTING IN 2024

- 12** Remove Fish Barriers US 101/SR 116 North Olympic Peninsula
- 13** Remove Fish Barriers US 101 – SR 109 Grays Harbor, Jefferson and Clallam Counties

Construction schedules are subject to change.

Americans with Disabilities Act (ADA) Information: This material can be made available in an alternate format by emailing the Office of Equity and Civil Rights at wsdotada@wsdot.wa.gov or by calling toll free, 855-362-4ADA(4232). Persons who are deaf or hard of hearing may make a request by calling the Washington State Relay at 711.

Title VI Notice to Public: It is the Washington State Department of Transportation's (WSDOT) policy to assure that no person shall, on the grounds of race, color, national origin, as provided by Title VI of the Civil Rights Act of 1964, be excluded from participation in, be denied the benefits of, or be otherwise discriminated against under any of its programs and activities. Any person who believes his/her Title VI protection has been violated, may file a complaint with WSDOT's Office of Equity and Civil Rights (OECR). For additional information regarding Title VI complaint procedures and/or information regarding our non-discrimination obligations, please contact OECR's Title VI Coordinator at (360) 705-7090.

Hood Canal Bridge






Hood Canal Bridge



Hood Canal Bridge



-  Powerful southwest winds
-  Strong tides
-  Intense pressure on bridge



Hood Canal Bridge



Hood Canal Bridge



Received from North Olympic Peninsula Tourism Commission

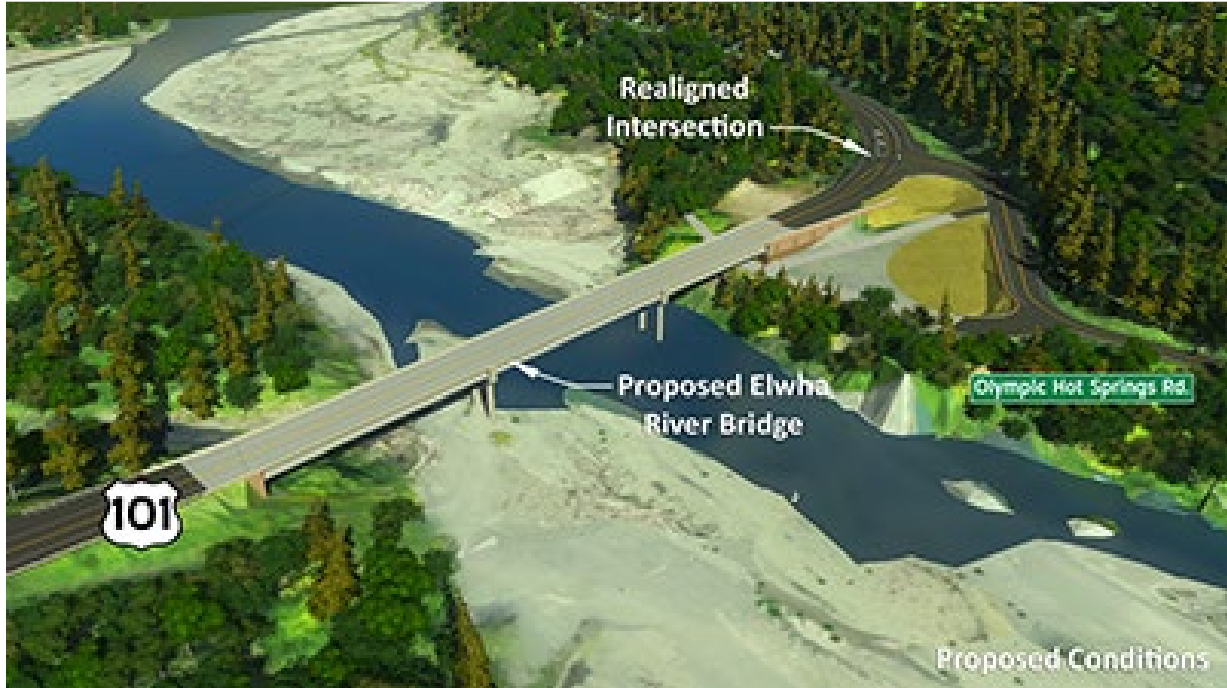
Major Event Dates- Olympic Peninsula
May- September 2023
AVOID HOOD CANAL BRIDGE CLOSURE

2023 Date	City	Event	Potential Attendance Impact
May 6-7	Sequim	Irrigation Festival	2K/250 out of town
May 13-14	Sequim	Irrigation Festival	2K/ 250 out of town
May 20-21	Port Townsend	Rhody Festival	2,500
May 27-28	Port Angeles	Juan de Fuca Festival	1,500/ 250 out of town
May 26-29	Olympic Peninsula	Memorial Weekend	50k
May 26-29	Sequim	Tandem Bike Ralley	400-800/ 80% out of town
June 2-4	Port Angeles	Discovery Marathon	8k/ 5k out of town
June 10-11	Port Angeles	Maritime Festival	4k/ 500 out of town
July 1-4	Olympic Peninsula	Independance Day Weekend	50k
July 7-9	Clallam Bay/ Sekiu	Sekiu Fun Days	1k/ 325 out of town
July 21-23	Sequim	Lavender Festival	25-30k/ 75% out of town
July 14-16	La Push	Quileute Days	4k
Aug 5-6	Sequim	Tour de Lavender	750/400 out of town
Aug 5-6	Port Angeles	Ride the Hurricane	1200/ 800 out of town
Aug 29-Sept1	Port Townsend	THING Festival	10k / 50% out of town
Sept 1-4	Olympic Peninsula	Labor Day Weekend	50k
Sept 8-10	Port Townsend	Wooden Boat	25-30k /15k-20k out of town
Sept 14-17	Forks	Forever Twilight Festival	4k/ 95% out of town
Sept 21-24	Port Townsend	Film Festival	10k/6k out of town

Holiday Weekend

Major Events

Elwha River Bridge



Elwha River Bridge



Elwha River Bridge



Elwha River Bridge



SR 104 Paradise Bay



2023 Intersection Safety Improvement

SR 104 Paradise Bay

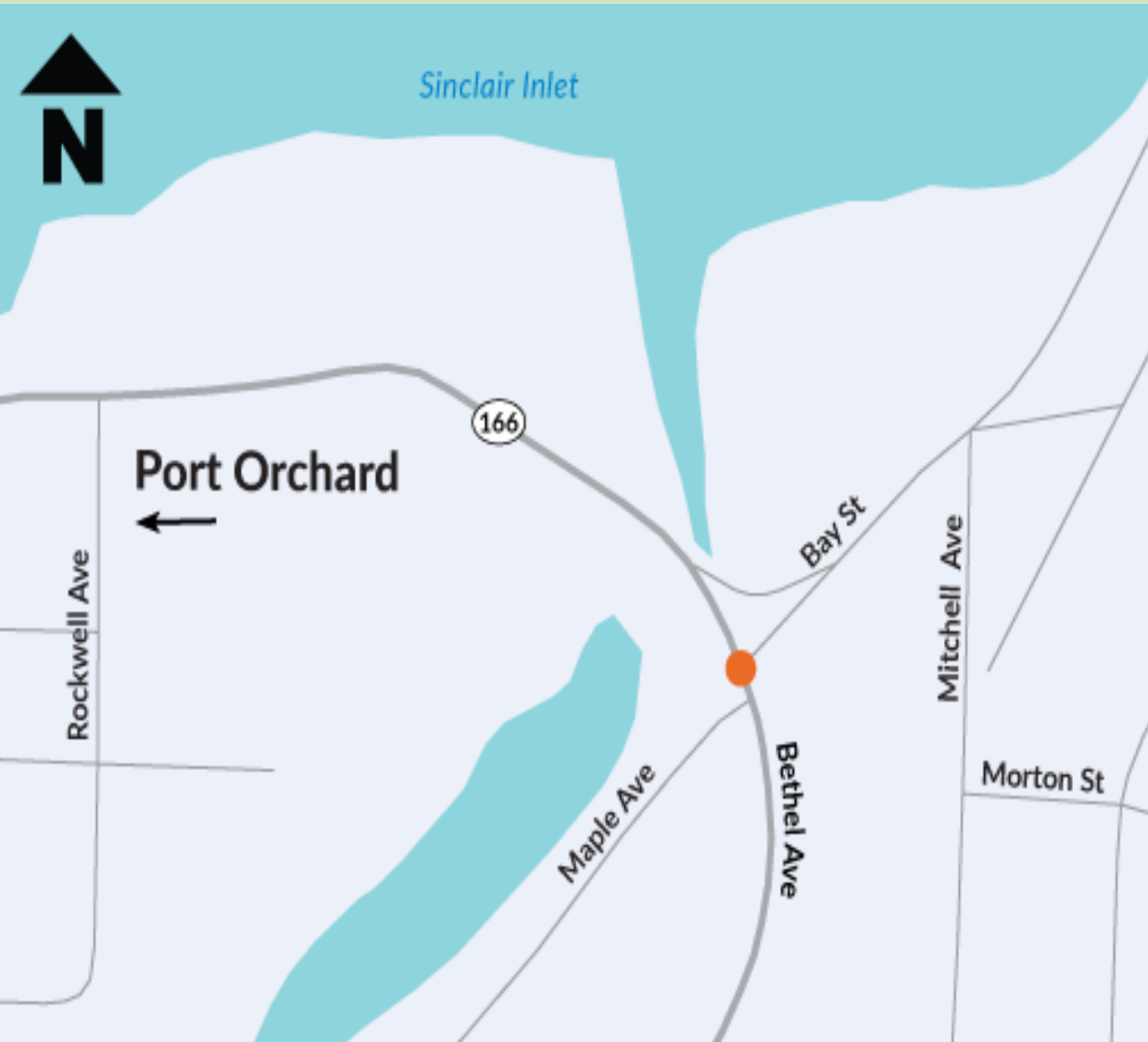


SR 104/SR 19 Roundabout



**2023 Intersection
Safety Improvements**

SR 166 - Bethel/Bay/Maple Intersection

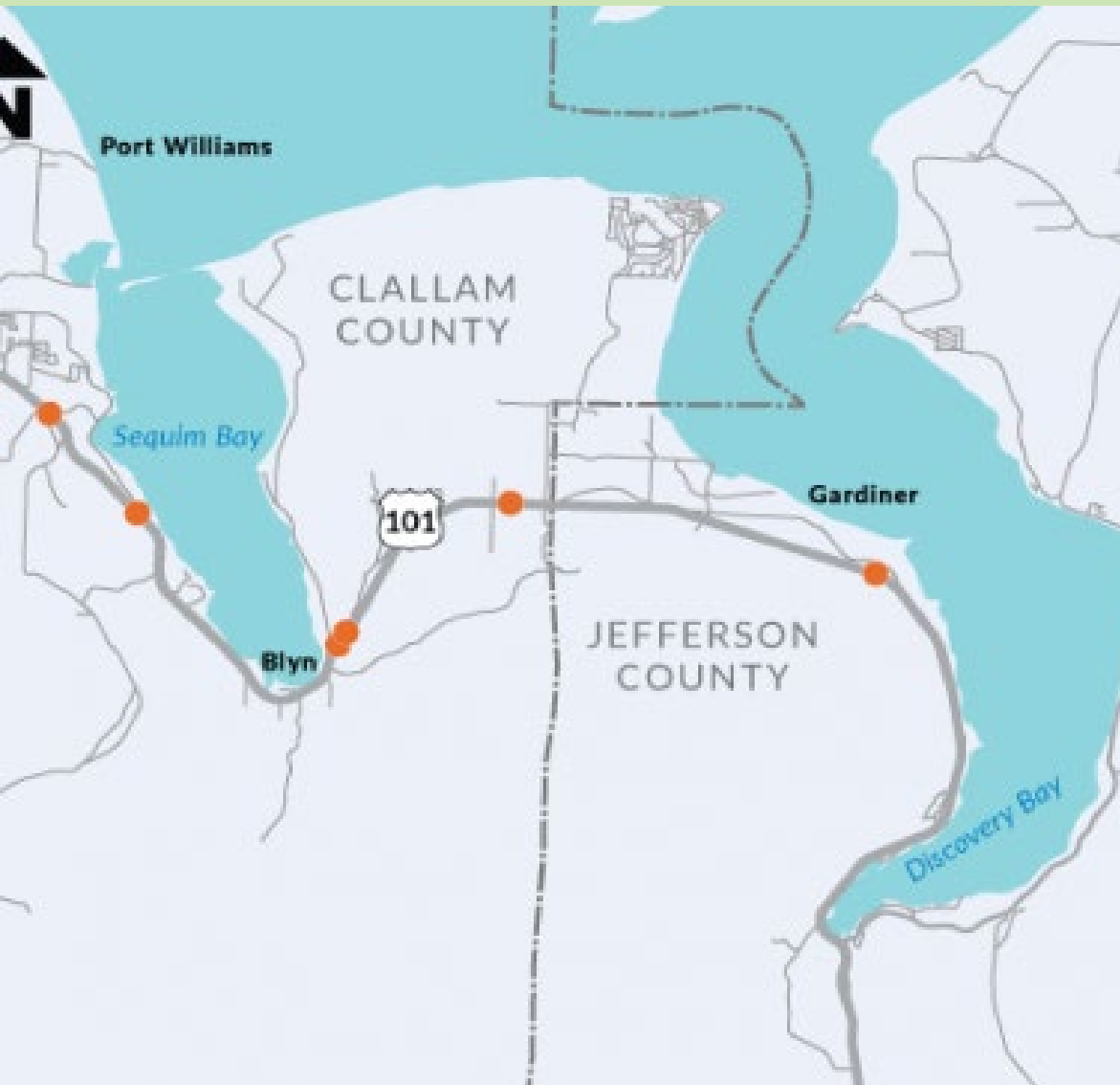


**2023 Intersection
Safety Improvements**

Fish Barrier Removal



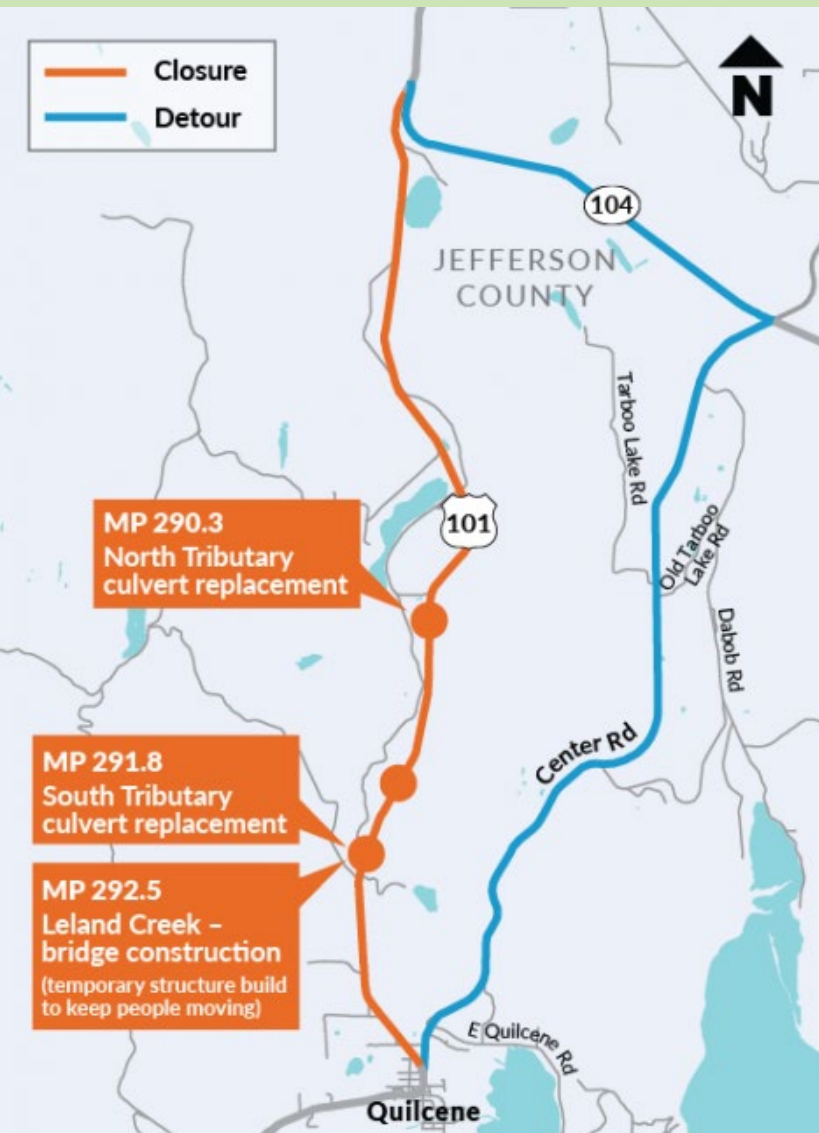
Fish Barrier Removal



From Left to right:

- Johnson Creek
- Discovery Creek
- Chicken Coop Creek
- Unnamed Tributary
- Eagle Creek
- Contractors Creek

Fish Barrier Removal



Estimated 25-day detour via Center Road during construction of the North and South Tributary culverts

Fish Barrier Removal



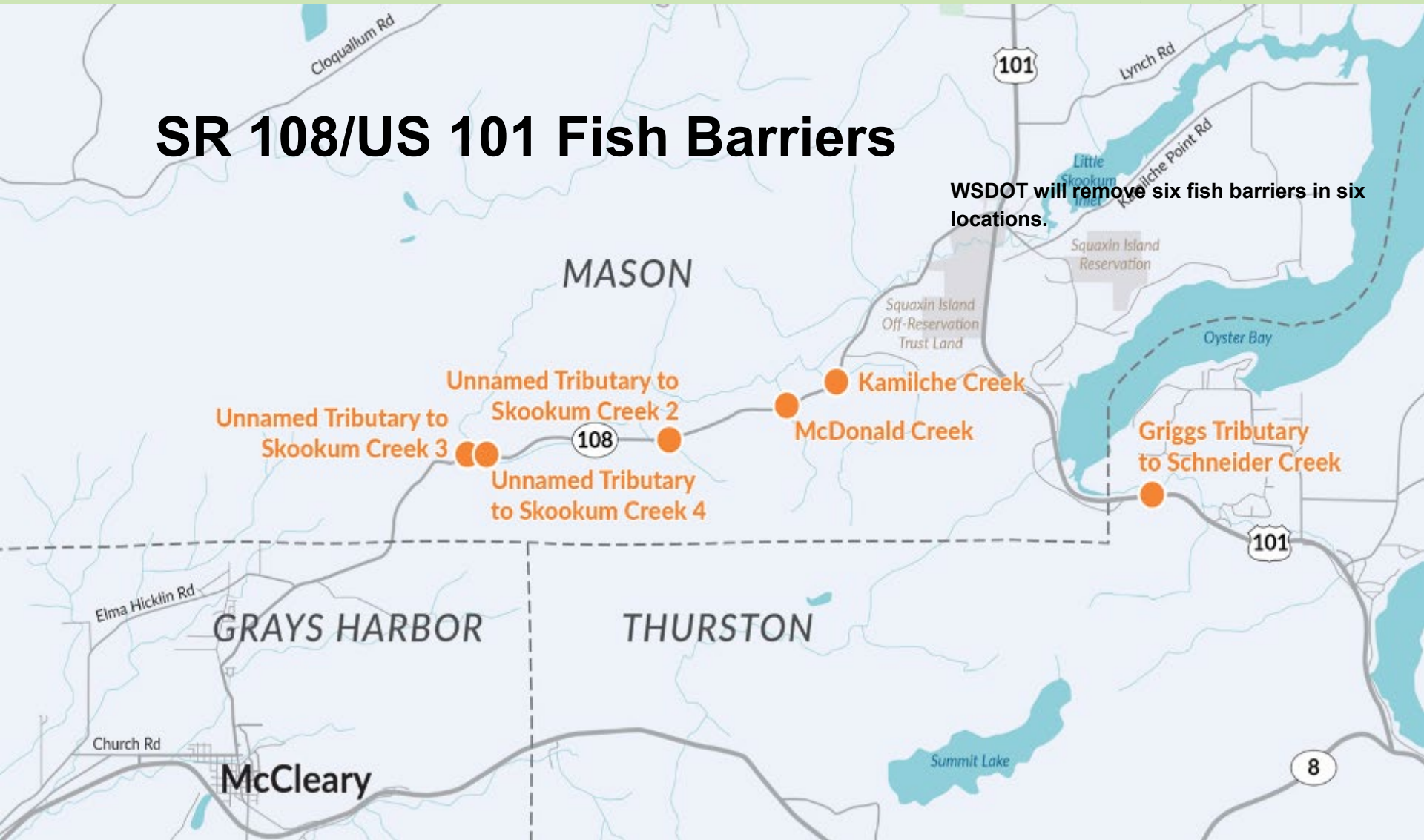
- Swansonville Creek
- Shine Creek

Fish Barrier Removal



SR 108/US 101 Fish Barriers

WSDOT will remove six fish barriers in six locations.

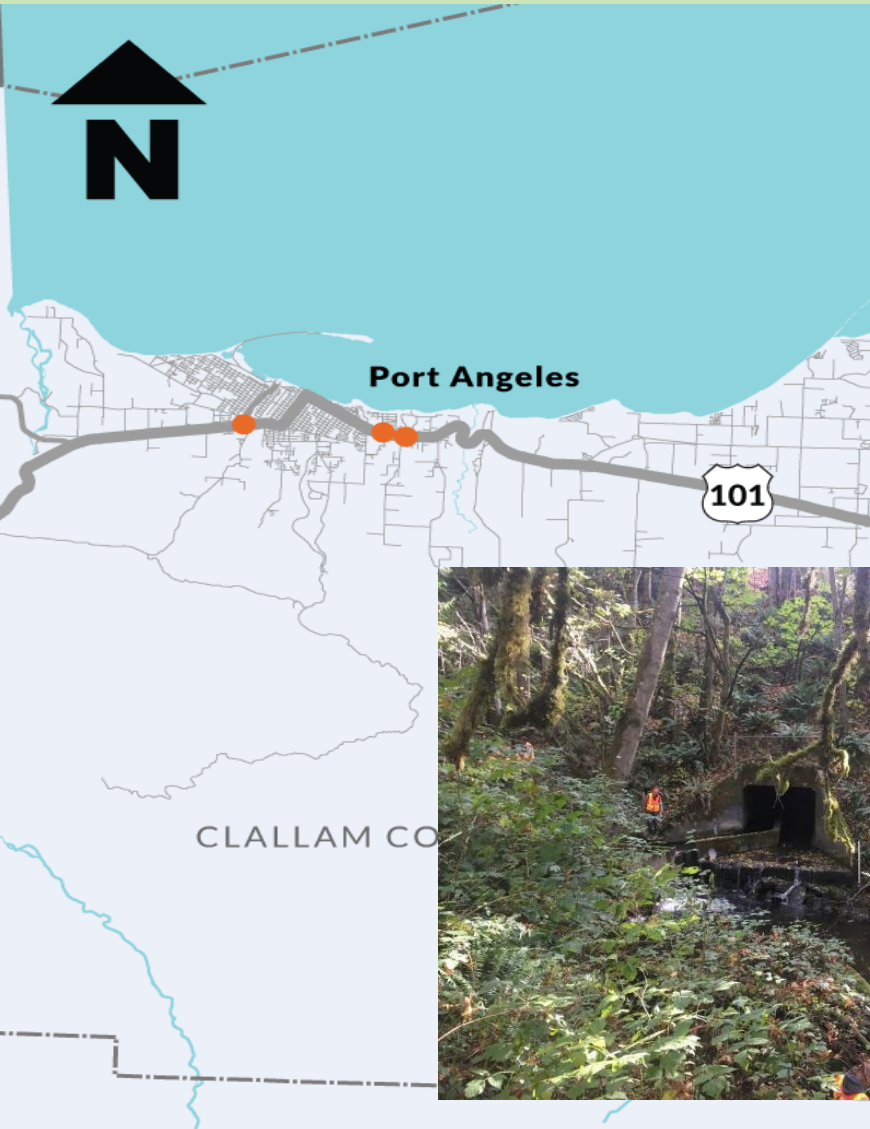


Fish Barrier Removal



- 29 Barriers
- 2023 thru 2026

Fish Barrier Removal



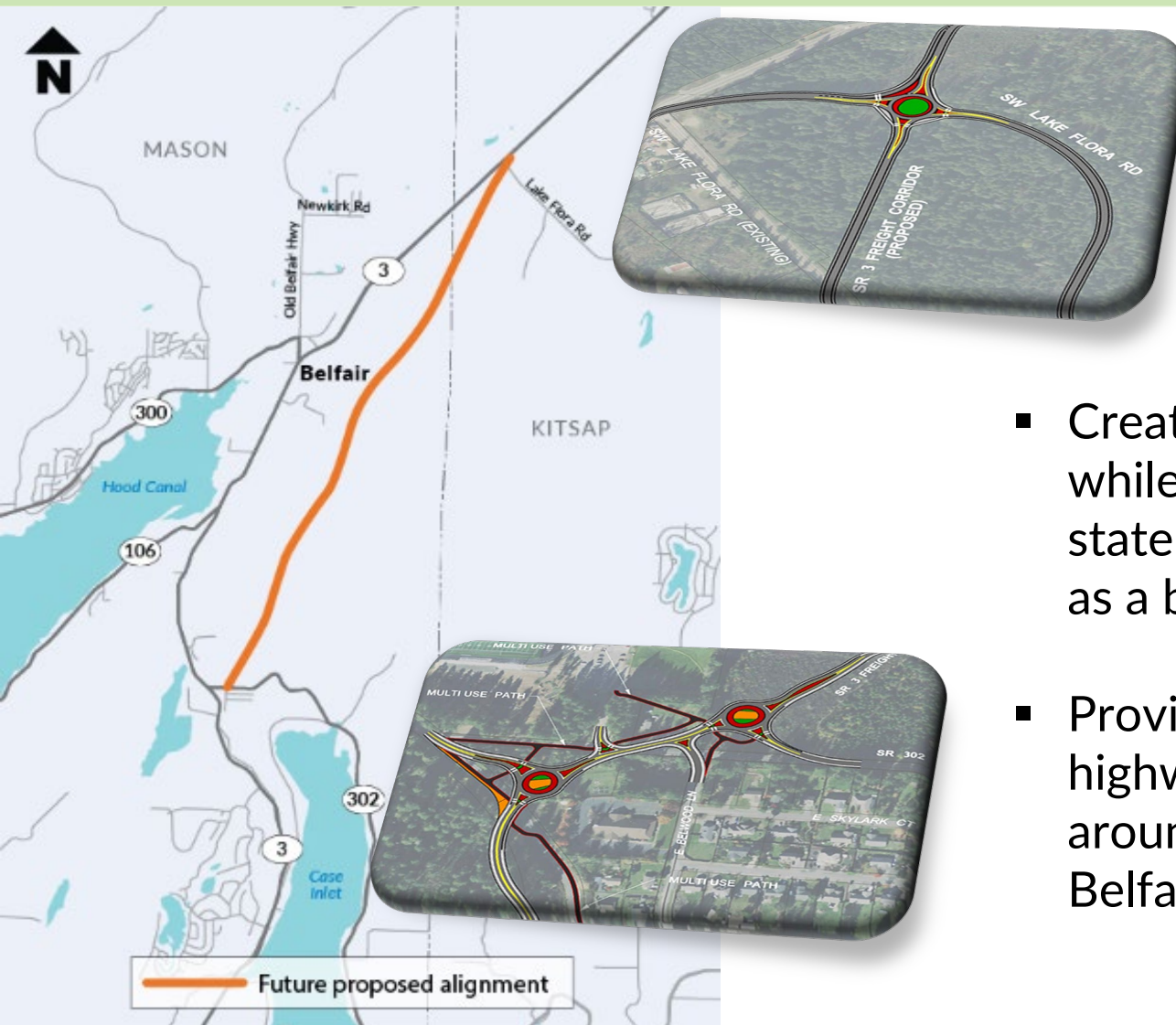
2024 Construction Start

- Tumwater Creek
- Ennis Creek
- Lees Creek



Future Investments

SR 3 Freight Corridor



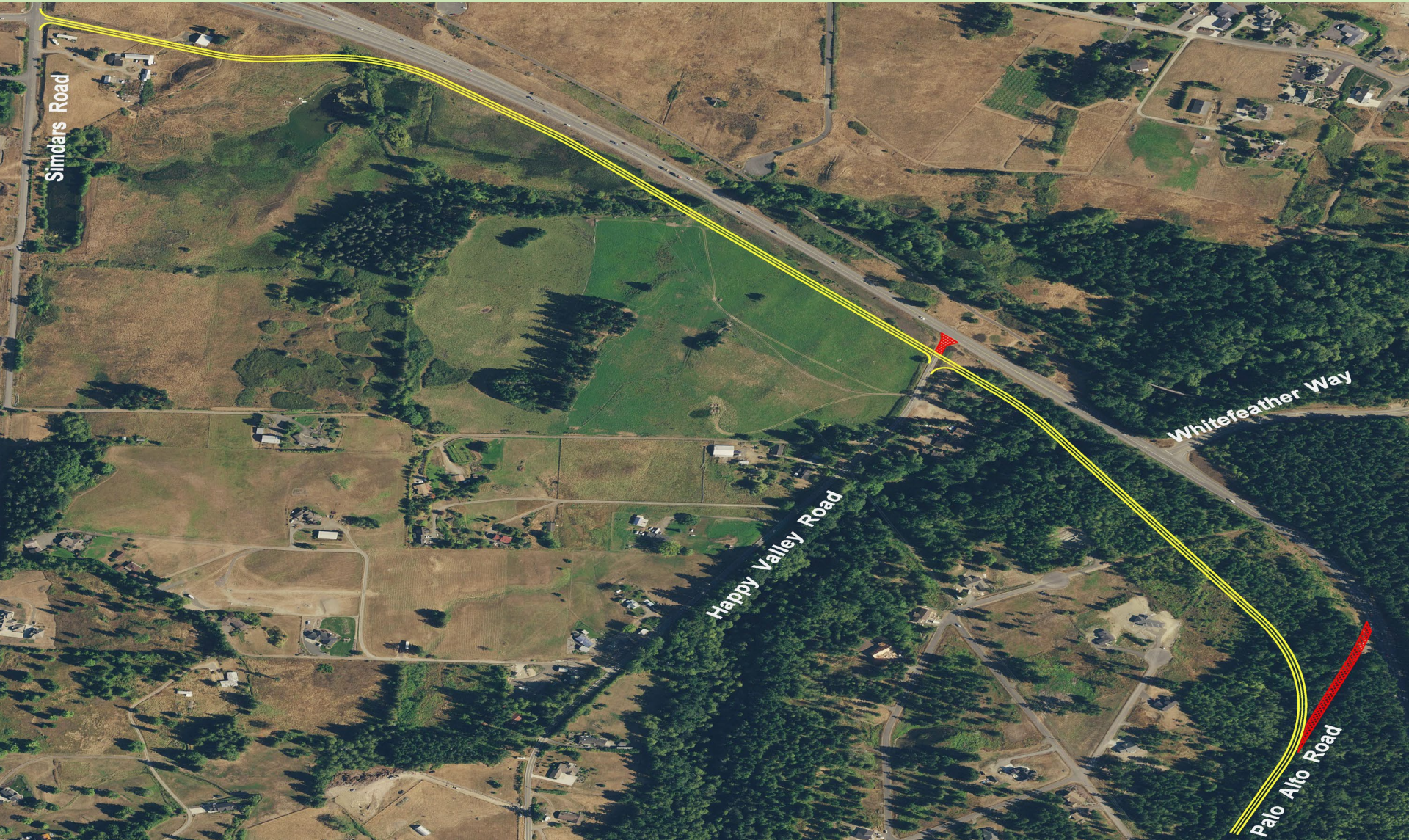
- Create a new route for SR 3 while maintaining the existing state highway through Belfair as a business loop.
- Provides an alternative for highway users to travel around and not through Belfair.

US 101, Simdars Bypass



MAW Funded - \$34.9 Million

US 101, Simdars Bypass



SR 3, Gorst Area



- Planning Study identified short, medium, and long-term recommendations
- MAW funded - \$74.3 million

Complete Streets

- Complete Streets is a requirement in Washington state law (RCW 47.24)
- Designed to “improve the safety, mobility, and accessibility of state highways ... with all users in mind, including pedestrians, bicyclists, and public transportation users”
- Applies to state transportation projects \$500,000 or more that start design on or after July 1, 2022



Complete Streets



- Screening of all projects over \$500,000
- Focus on projects in:
 - Incorporated cities,
 - Other population centers where active transportation gaps have been identified in WSDOT or local plans
 - Areas where projects touch overburdened communities
- About 430 projects screened statewide (with design start dates between 2022 and 2028)
- Complete Streets applies to some portion of ~47% of projects

Complete Streets Project Screening Worksheet

PIN:	
Project Title:	

Screening

PART A. Screening Questions

1. Is any portion of the project in an incorporated city?	<input type="checkbox"/> Yes	<input type="checkbox"/> No	
a. If A1 = "No", is any portion of the project in a population center?	<input type="checkbox"/> Yes	<input type="checkbox"/> No	<input type="checkbox"/> NR
If A1 = "Yes", please check "NR".			

If A1 = "No" and A1a = "Yes", please proceed with researching criteria A2-A4.
If A1 = "Yes" or both A1 and A1a = "No", A2-A4 are optional and you may proceed to Part B.

2. Do any WSDOT plans identify active transportation gaps within or across the extents of the project?	<input type="checkbox"/> Yes	<input type="checkbox"/> No	<input type="checkbox"/> NR
3. Does the project traverse any vulnerable populations/overburdened communities as defined below in the V/O Screening Questions section?	<input type="checkbox"/> Yes	<input type="checkbox"/> No	<input type="checkbox"/> NR
4. Do any local plans identify active transportation gaps within or across the extents of the project?*	<input type="checkbox"/> Yes	<input type="checkbox"/> No	<input type="checkbox"/> NR

* Local plans review is optional if A2 or A3 are "Yes".

Regardless of the answers in Part A, please mark whether or not the project is in or adjacent to tribal lands or has a documented tribal nexus, as noted in the V/O Screening Questions section.	<input type="checkbox"/> Yes	<input type="checkbox"/> No
--	------------------------------	-----------------------------

PART B. Project Detail Questions

1. Is bicycling restricted (prohibited) throughout the entire project limits?	<input type="checkbox"/> Yes	<input type="checkbox"/> No
2. Is this a regionwide project with only low-cost implementation elements at any given spot? (e.g., patching, crack sealing, spot painting, minor element repairs, and regionwide signs projects).	<input type="checkbox"/> Yes	<input type="checkbox"/> No
3. Is this project exclusively Limited Access mainline?	<input type="checkbox"/> Yes	<input type="checkbox"/> No
4. Does the extent of the work within incorporated cities and other population centers total to less than \$500,000?	<input type="checkbox"/> Yes	<input type="checkbox"/> No

Complete Streets Analysis Determination

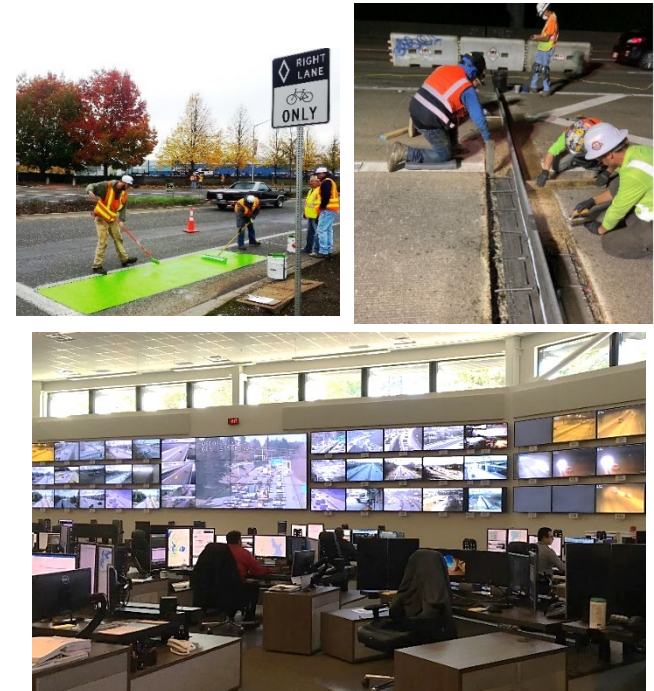
This project requires a Complete Streets analysis.	<input type="checkbox"/> Yes	<input type="checkbox"/> No
If the determination is "No", please provide a short description of the reason. If answered "Yes", no explanation is required but additional reasoning can be provided in this space if desired. [place justification here or delete if not needed]		

Please follow the steps below to submit the project for Headquarters concurrence review.

Resilience is the ability to prepare for, and adapt to, changing conditions and withstand and recover rapidly from disruptions.

A resilient transportation system is:

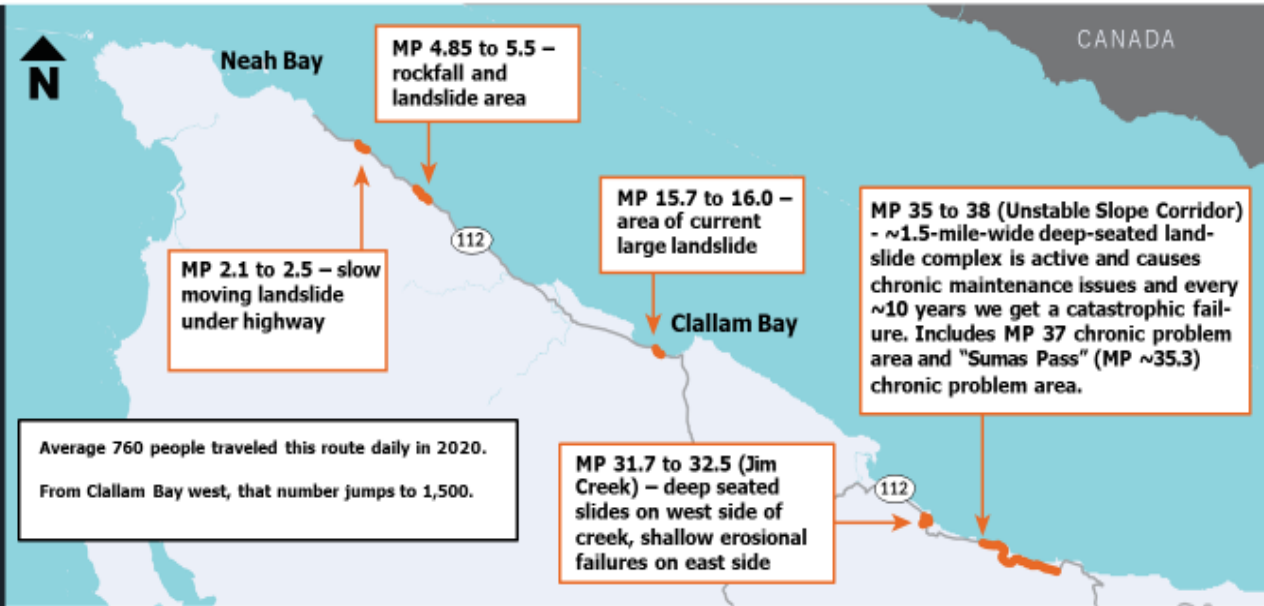
- **Safe**
- **Sound**
- **Smart**



STATE ROUTE 112 OPERATIONS

State Route 112 connects the communities of Neah Bay, Clallam Bay and Joyce to the rest of the Olympic Peninsula. The highway sits on an active slide zone and presents maintenance challenges every year as landslides and storms regularly close this route.

Our engineering geologists have documented significant slide activity every 10-20 years, beginning in 1954. The topographical and geological challenges along SR 112 require a calculated approach to address ongoing drainage, stability, and debris concerns.



SR 112/Clallam Bay – Emergency Repair

Construction to reopen SR 112 near Clallam Bay at milepost 15.85 is expected to begin the week of Jan. 31. Crews will stabilize the slope, remove debris from the roadway, rebuild damaged pavement and install new guardrail. Work is expected to last 4-8 weeks.



SR 112/Jim Creek West – Emergency Repair

Our engineering geologists are preparing their final recommendations to reopen SR 112 near Jim Creek at milepost 32. Design solutions may include a combination of drilled piles or shifted rows to stabilize the creek in addition to replacing an outdated culvert beneath the highway. Crews are investigating drainage concerns and groundwater improvements in this long-term fix. We expect to have a contract available for bids on Friday, Feb. 4. Work is expected to last 4-8 weeks.



Discussion

Stay Connected!

www.wsdot.wa.gov

**Sign up for updates –
Traffic and Construction News**