

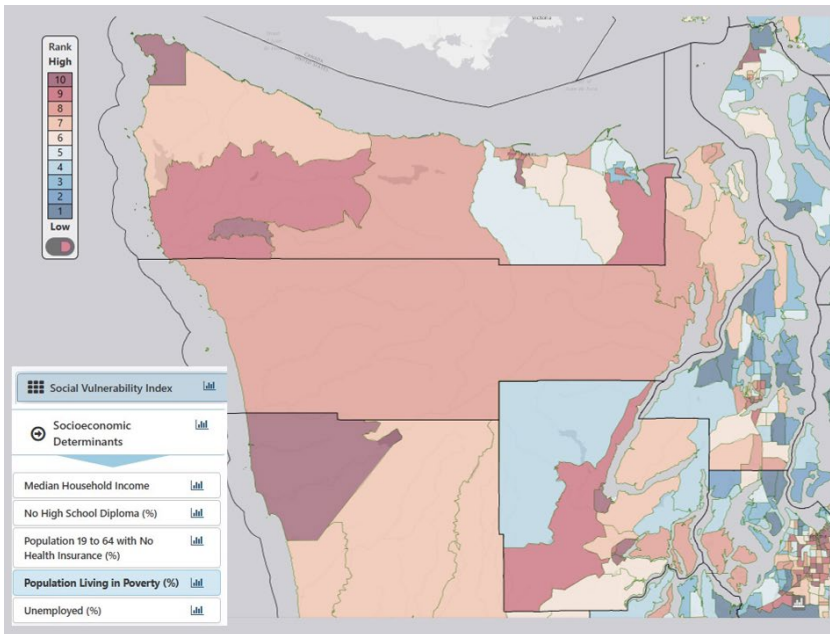
EQUITY CONSIDERATIONS

PRTPO 2024 Transportation Alternatives Call for Projects

In its 2024 call for projects, PRTPO limited eligible applicants to those from rural counties. In addition, PRTPO identified two sets of demographic characteristics as being particularly relevant to Transportation Alternatives projects and the community benefits they provide. Especially for people who are unable to drive – either due to age, disability, or limited income – Transportation Alternatives projects can increase safe and convenient travel choices and reduce mobility insecurities.

PRTPO used the [Washington Tracking Network](#) maintained by the WA State Department of Health and its [Information-by-Location mapping tools](#) to look at the prevalence of poverty in the vicinity of each project as well as a select set of key household composition indicators including people over 65, people under 18, people with disabilities, and single-parent households. IBL maps compare and rank population characteristics by Census Tract to estimate the degree of disparity in an area compared to the rest of the state.

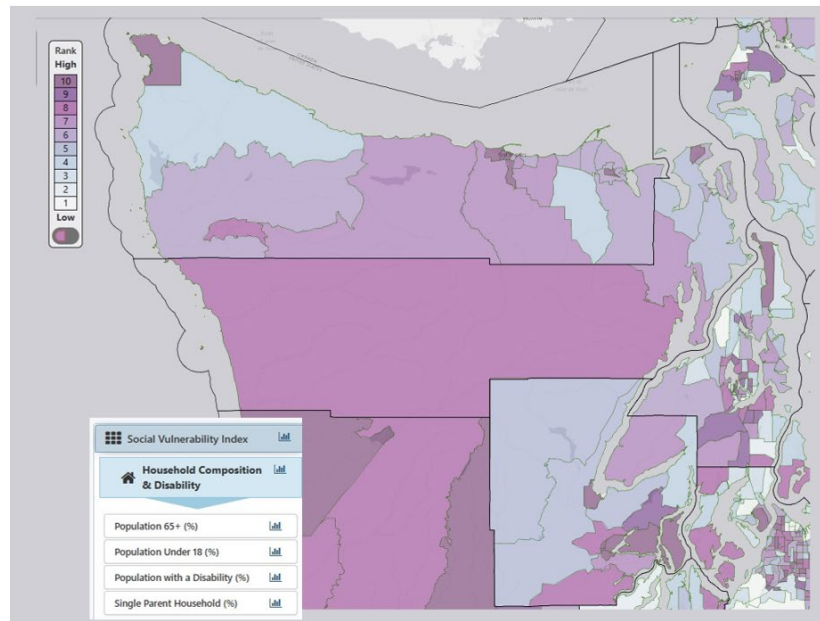
These maps provide a snapshot of the Peninsula Region as a whole. The maps on the following pages provide project vicinity detail for each of the four projects.



Percent of Population Living in Poverty
Statewide Rank, by Census Tract

Poverty is closely associated with HSTP considerations. It is indicative of low-income population distribution and is a major factor in mobility insecurity.

(2021 ACS data)



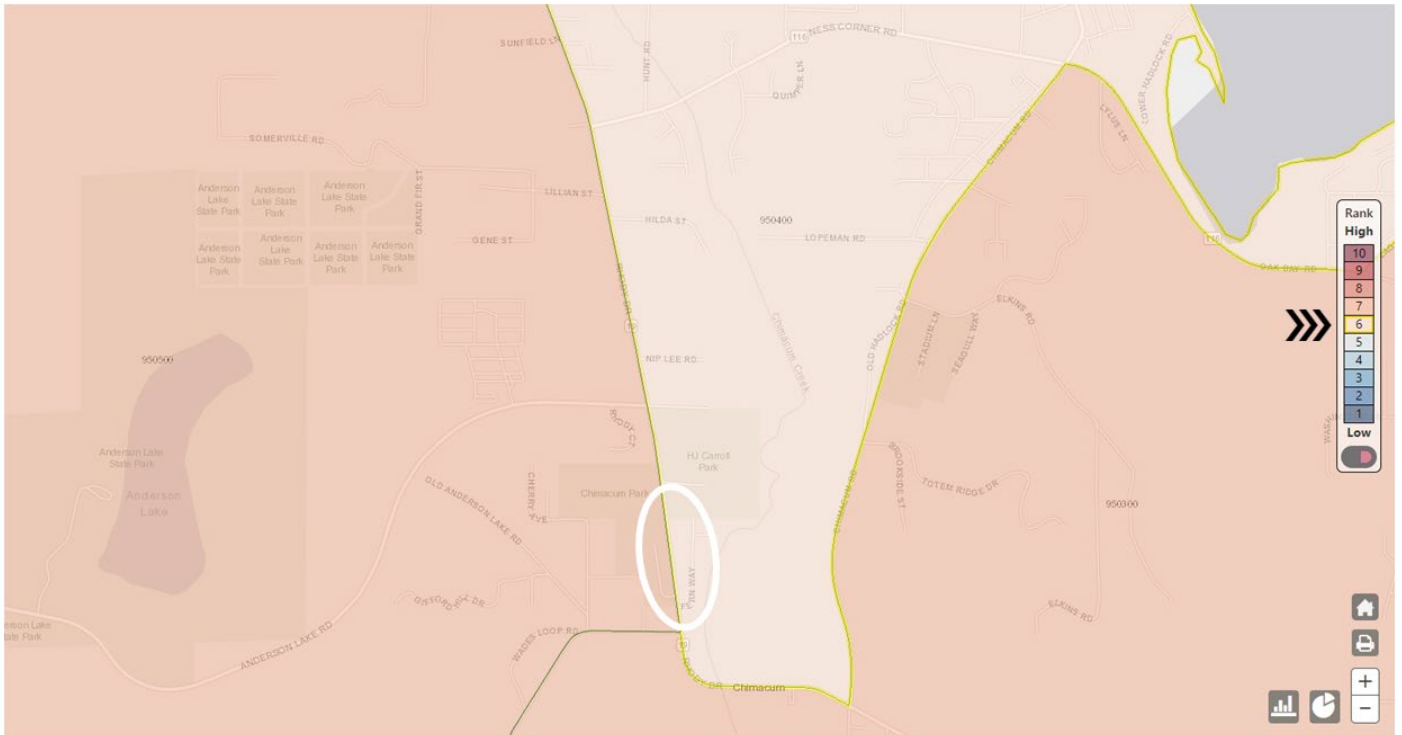
Household Composition & Disability
Statewide Rank, by Census Tract

Characteristics of the combined “Household Composition & Disability” metric align closely with HSTP considerations. It is indicative of transit-dependent populations and others with mobility vulnerabilities.

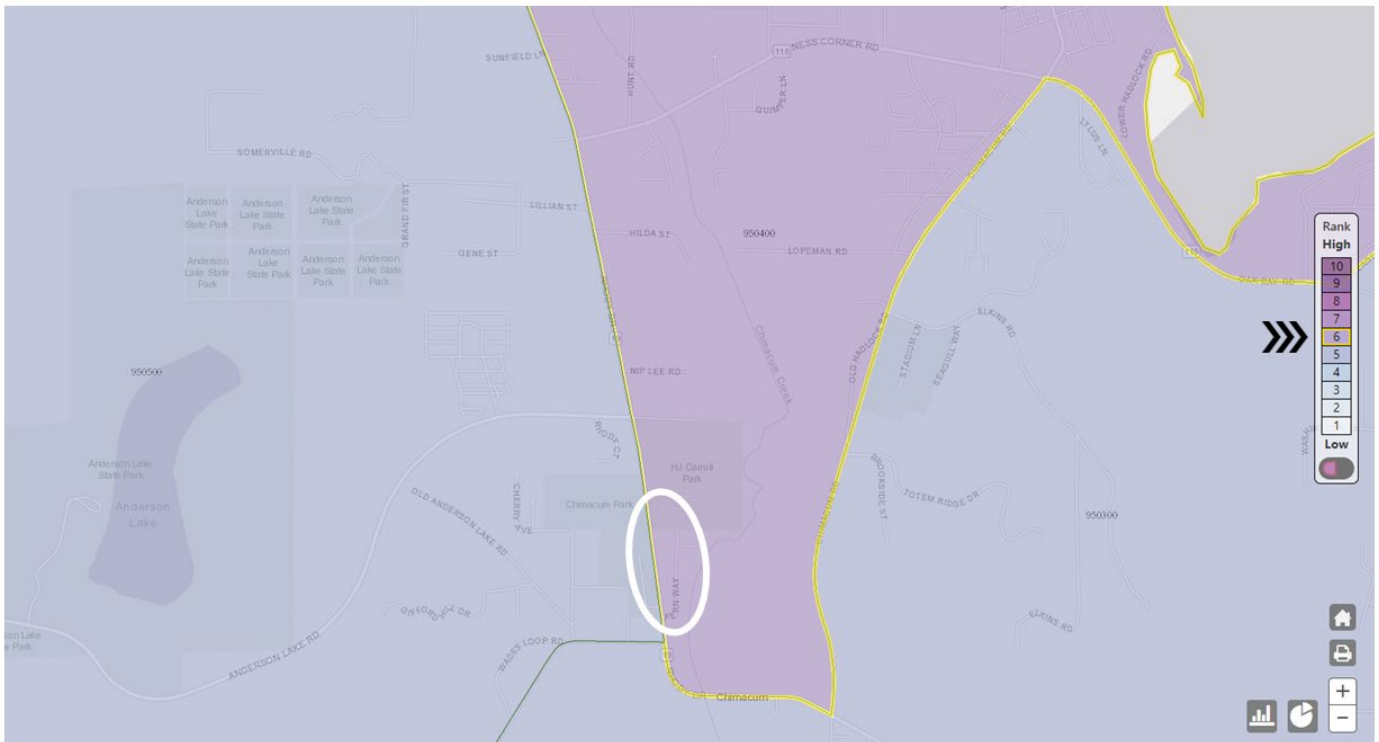
(2021 ACS data)

SR 19 Rhody Drive Ped-Bike Improvements – North Segment *Jefferson County*

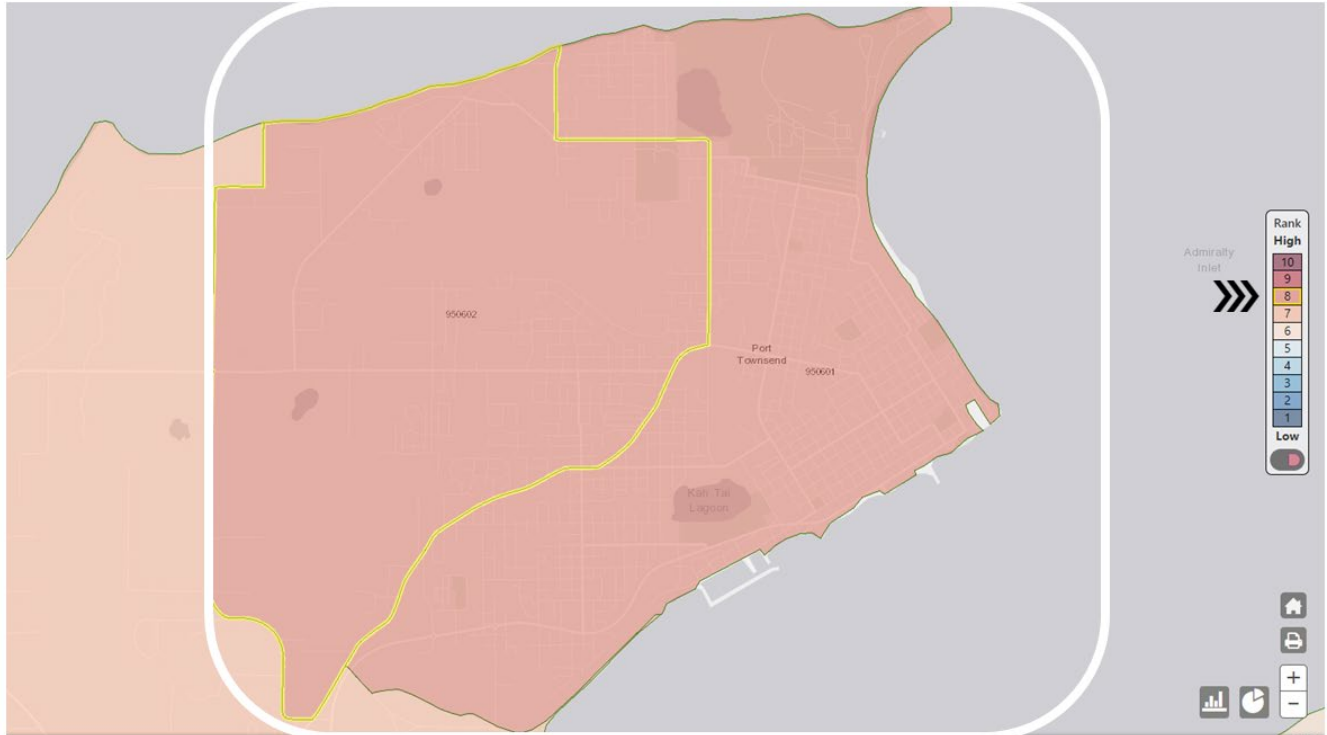
Jefferson County – SR 19 Rhody Drive Bike/Ped Improve, N Segment – Prevalence of Poverty



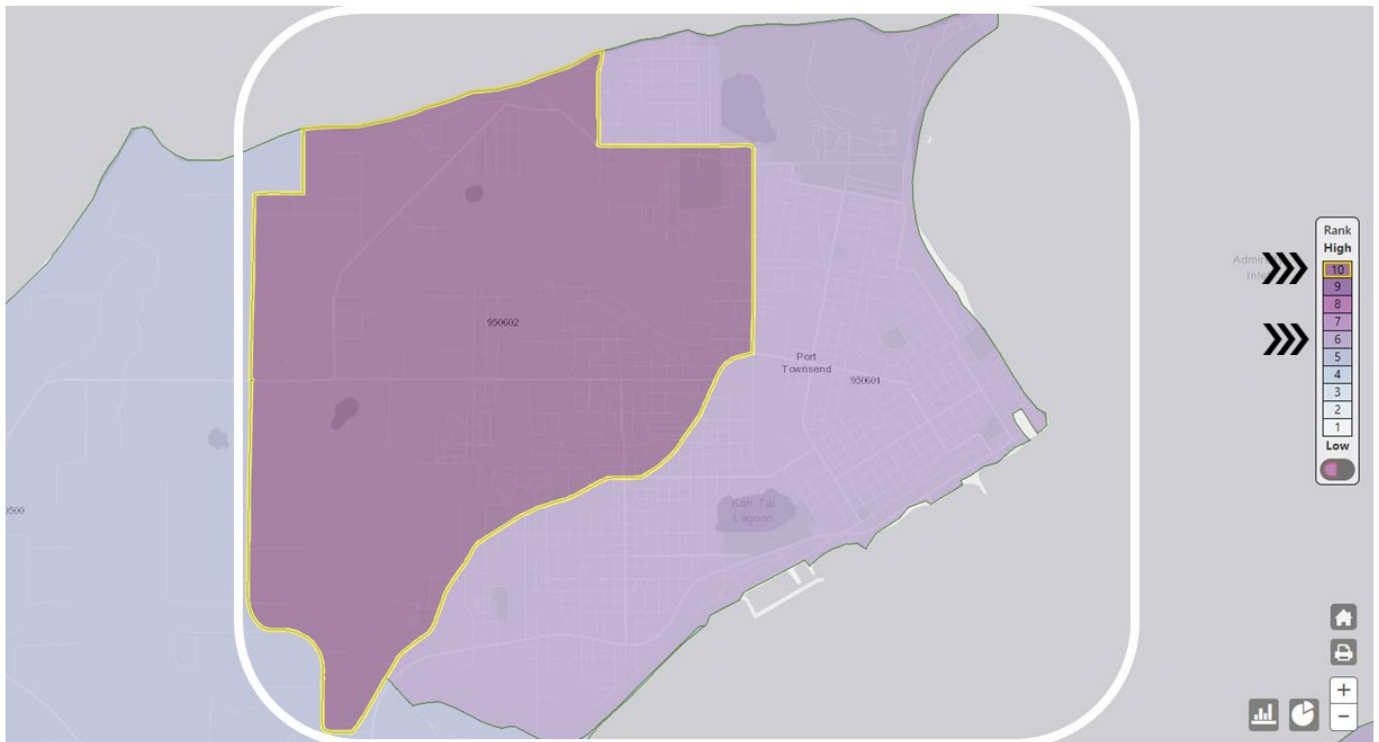
Jefferson County – SR 19 Rhody Drive Bike/Ped Improve, N Segment – Prevalence of Household Vulnerability



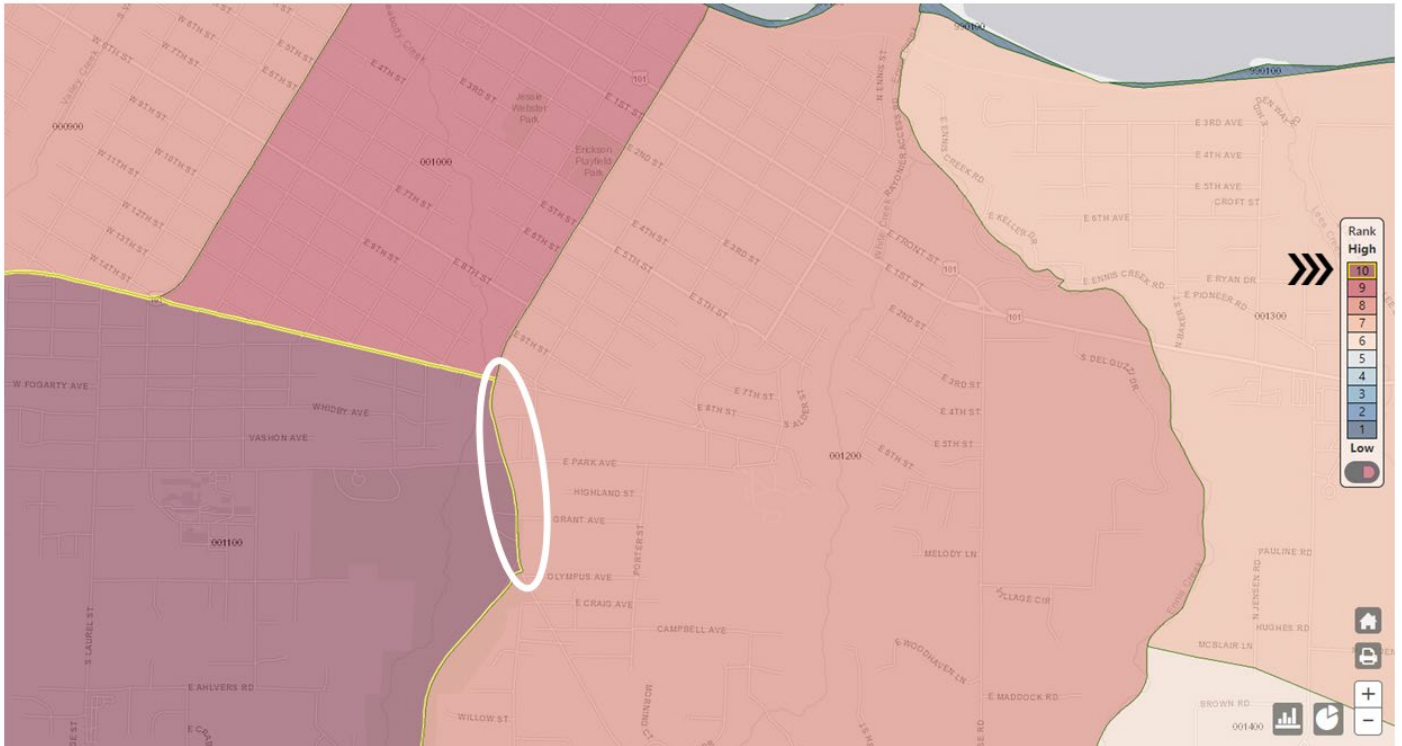
Port Townsend – Multi-modal Arterial Street Cohesive Investment Strategy–Prevalence of Poverty



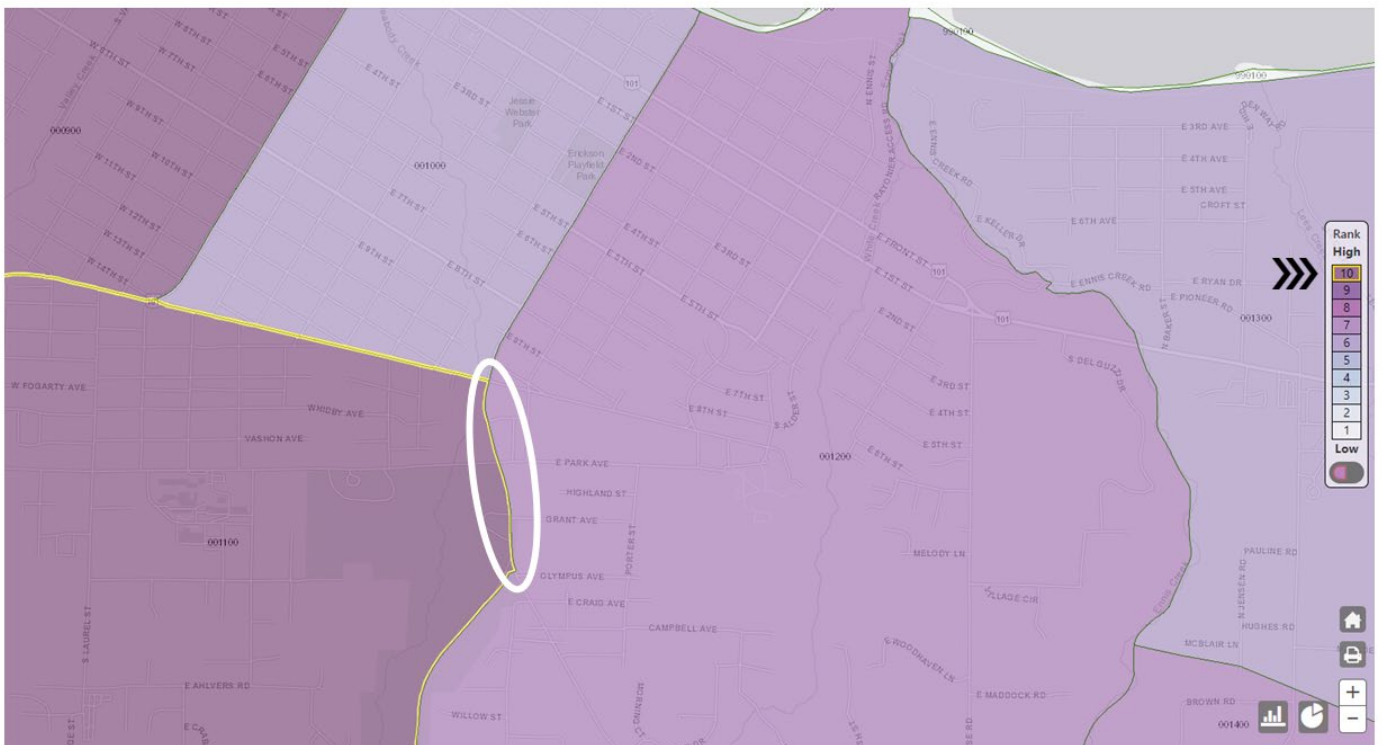
Port Townsend – Multi-modal Arterial Street Cohesive Investment Strategy–Prevalence of Household Vulnerability



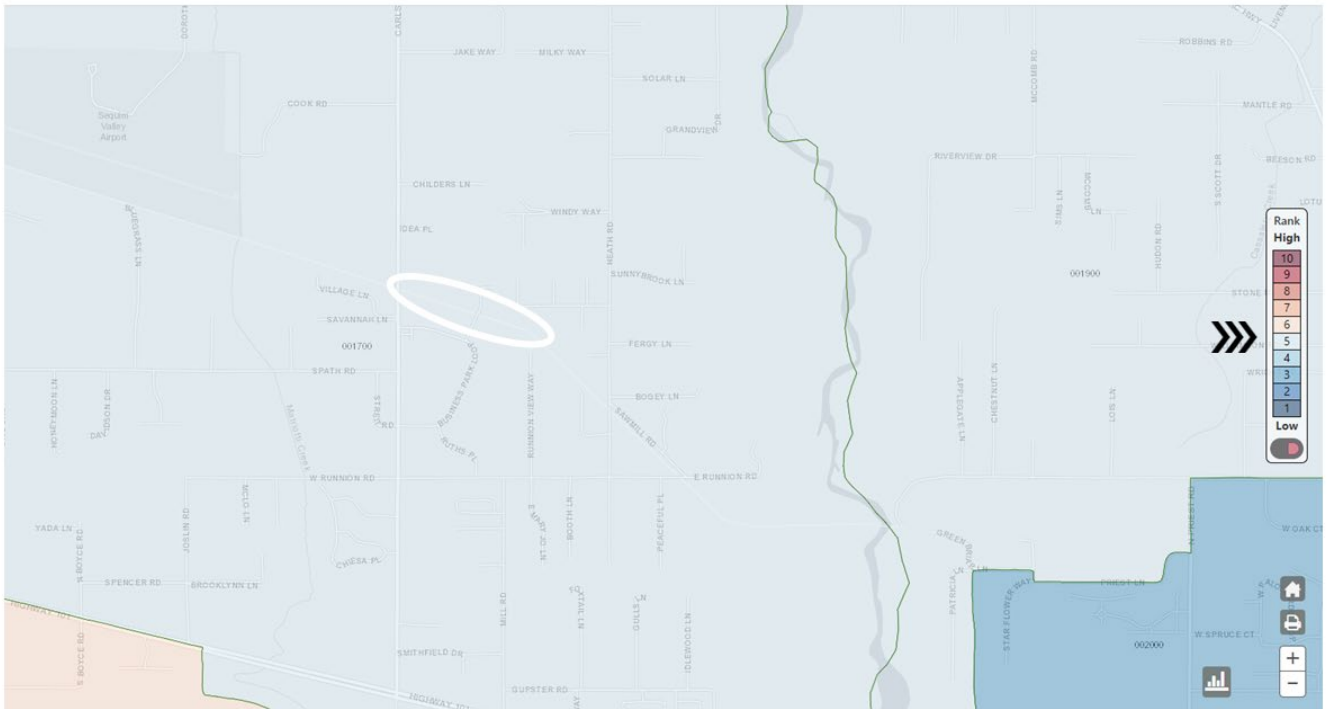
Port Angeles – Race Street Complete Street Phase 2 Construction – Prevalence of Poverty



Port Angeles – Race Street Complete Street Phase 2 Construction – Prevalence of Household Vulnerability



Jamestown S’Klallam Tribe – Carlsborg Crossing, Olympic Discovery Trail – Prevalence of Poverty



Jamestown S’Klallam Tribe – Carlsborg Crossing, Olympic Discovery Trail – Prevalence of Household Vulnerability

