

US 101, SR 104, SR 20, SR 19 Construction

NORTH OLYMPIC PENINSULA 2023 TO 2025

Maintaining Infrastructure, Improving Public Safety, and the Environment

US 101 and State Routes 104, 20 and 19 serve residents, businesses, and visitors to the Olympic Peninsula. The peninsula's ecological diversity, from shorelines to mountain tops, attracts people from around the world to live, work and recreate in the region. These highways connect Olympic Peninsula communities to each other and other areas of Puget Sound, making way for the movement of goods and services across western Washington.

In spring 2023, we will begin needed projects across the north coast of the Olympic peninsula. Construction projects will affect the flow of traffic on sections of US 101 from Port Angeles and Sequim to Discovery Bay and south of the SR 104 interchange. At the same time, more construction and preservation projects will occur elsewhere on the peninsula, including on the Hood Canal Bridge.

This work is necessary to maintain the movement of people and goods across the peninsula and Hood Canal. The work is also vital for a healthy environment for salmon and orcas.

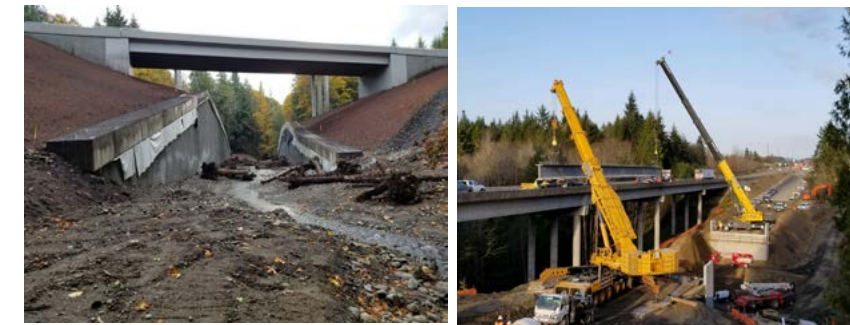
The work is needed to:

- Keep the transportation system in a state of good repair
- Improve the resiliency of our highways
- Reduce the potential for collisions
- Keep the Hood Canal Bridge operational
- Connect habitat for fish and wildlife across highways



Expect traffic back-ups and delays between Sequim and the Hood Canal Bridge

Nearly a dozen projects of varying size will affect travel. Our contractors and crews will close shoulders, shift travel lanes, implement one-way alternating traffic and possibly require detours. Heavy construction is expected each construction season, summer to fall, through 2025. Some projects will start and finish in 2023, while others will begin in 2024. Stay up to date on construction schedules with the WSDOT website or sign up for emails.



Project Spotlight: SR 104 Hood Canal Bridge Centerlock Repair Coming in 2023

The State Route 104 Hood Canal Bridge is truly unique. There are no others like it in the world. Built to withstand strong winds, big waves, and powerful tides, this bridge serves 18,000 vehicles per day in a salty, corrosive environment. Federal law requires that the bridge must yield to mariners. That means it must be able to retract its massive draw span at any time. Moving electrical and hydraulic systems work together to make it all happen. Repairs on two key elements of the bridge are scheduled in Summer 2023. The elements needing repair help guide the draw spans together and keep the draw spans closed.

To make the repairs, the bridge will close to all land traffic for up to four weekends. There are up to 14 nights where there will be intermittent closures to traffic.



Know Before You Go

These projects will cause more travel delays than travelers typically see on the Olympic Peninsula. We encourage travelers to plan ahead, check traffic conditions before hitting the road, and travel during non-peak periods as much as possible.

Stay Informed:

- [Project webpages](#)
- [WSDOT Statewide Travel Map](#)
- WSDOT App
- Twitter
- Facebook
- [GovDelivery email subscriptions](#)
- Highway Advisory Radio
- Call: 5-1-1

Project contact:

Steve Roark
Region Administrator

MaryLou Shannon
Assistant Region Administrator – Construction

360-357-2659

US 101 AND SR 104, SR 19, SR 20

NORTH OLYMPIC PENINSULA

2023 CONSTRUCTION



What can travelers expect?

All fish barrier removal projects use a mixture of around-the-clock lane closures, shifted lanes and alternating one-lane traffic around the work zones, reduced speed limits and detours. Please refer to project web pages for specific details.

- 1 Remove Fish Barrier** [US 101 May Creek in Vic of Dowans Creek Rd](#)
- 2 Remove Fish Barriers** [East Jefferson County](#)

- 3 Remove Fish Barriers** [US 101 Jefferson and Clallam Counties](#)

- 4 Remove Fish Barriers** [US 101 - Leland Creek and Unnamed Tribs](#)

- 5 Bridge Replacement** [US 101 Elwha River Bridge](#)
What can travelers expect? Approximate two-week closure at end of project to connect travel lanes to new bridge. Detour will be in place using SR 112, SR 113 and Little River Road.

- 6 Bridge Repair** [SR 104 - Hood Canal Bridge - Center Lock Rehabilitation](#)
What can travelers expect: The bridge will close to all traffic for up to four weekends. There are up to 14 nights where there will be intermittent closures to traffic.

- 7 Roundabout** [SR 104 - Paradise Bay - Shine Road - Safety Improvement](#)
What can travelers expect: Shifted lanes around the work zone and intermittent lane closures. Crews will maintain one lane in each direction as much as possible. Short-term closure of SR 104 access from Shine Road for approximately two weeks.
- 8 Roundabout** [SR 104 - SR 19 - Safety Improvements](#)
What can travelers expect: Shifted lanes around the work zone, temporary lane closures

- 9 Roundabout** [SR 20/Kearney St Intersection](#)
What can travelers expect: Temporary detours lasting a few weeks each around the work zone.
- 10 Emergency Repairs** [SR 112 Pysht River](#)
What can travelers expect: Single lane closures causing a backup of less than 15 minutes over several weeks.

- 11 MAINTENANCE AND PRESERVATION**
In addition to the listed projects, WSDOT has roadway preservation activities planned for summer 2023.
What can travelers expect: Single lane closures and alternating one-lane traffic during daytime hours on US 101 and SR 104. Travelers will see delays.




US 101 AND SR 104, SR 19, SR 116

NORTH OLYMPIC PENINSULA



2024 CONSTRUCTION



PROJECTS CONTINUING FROM 2023

- 1** Remove Fish Barrier  US 101 May Creek in Vic of Dowans Creek Rd
- 3** Remove Fish Barriers  US 101 Jefferson and Clallam Counties
- 4** Remove Fish Barriers  US 101 - Leland Creek and Unnamed Tribs
- 5** Bridge Replacement US 101 Elwha River Bridge
- 7** Roundabout SR 104 - Paradise Bay - Shine Road - Safety Improvement
- 8** Roundabout SR 104 - SR 19 - Safety Improvements

PROJECTS STARTING IN 2024

- 12** Remove Fish Barriers  US 101/SR 116 North Olympic Peninsula
- 13** Remove Fish Barriers  US 101 - SR 109 Grays Harbor, Jefferson and Clallam Counties

Construction schedules are subject to change.

Americans with Disabilities Act (ADA) Information: This material can be made available in an alternate format by emailing the Office of Equity and Civil Rights at wsdotada@wsdot.wa.gov or by calling toll free, 855-362-4ADA(4232). Persons who are deaf or hard of hearing may make a request by calling the Washington State Relay at 711.

Title VI Notice to Public: It is the Washington State Department of Transportation's (WSDOT) policy to assure that no person shall, on the grounds of race, color, national origin, as provided by Title VI of the Civil Rights Act of 1964, be excluded from participation in, be denied the benefits of, or be otherwise discriminated against under any of its programs and activities. Any person who believes his/her Title VI protection has been violated, may file a complaint with WSDOT's Office of Equity and Civil Rights (OECR). For additional information regarding Title VI complaint procedures and/or information regarding our non-discrimination obligations, please contact OECR's Title VI Coordinator at (360) 705-7090.