

# Washington State Broadband Office

## State Broadband Update

Peninsula Regional Transportation Planning Organization (PRTPO)  
Executive Board Meeting

---

**Russ Elliott**

DIRECTOR, WASHINGTON STATE BROADBAND OFFICE

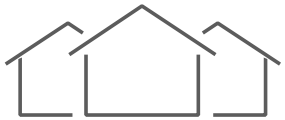
MAY 18, 2021



Washington State  
Department of  
**Commerce**

# We strengthen communities

---



**HOUSING  
HOMELESSNESS**



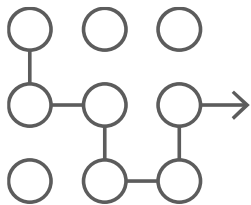
**INFRASTRUCTURE**



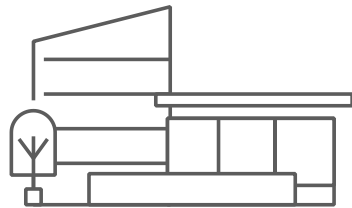
**BUSINESS  
ASSISTANCE**



**ENERGY**



**PLANNING**



**COMMUNITY FACILITIES**

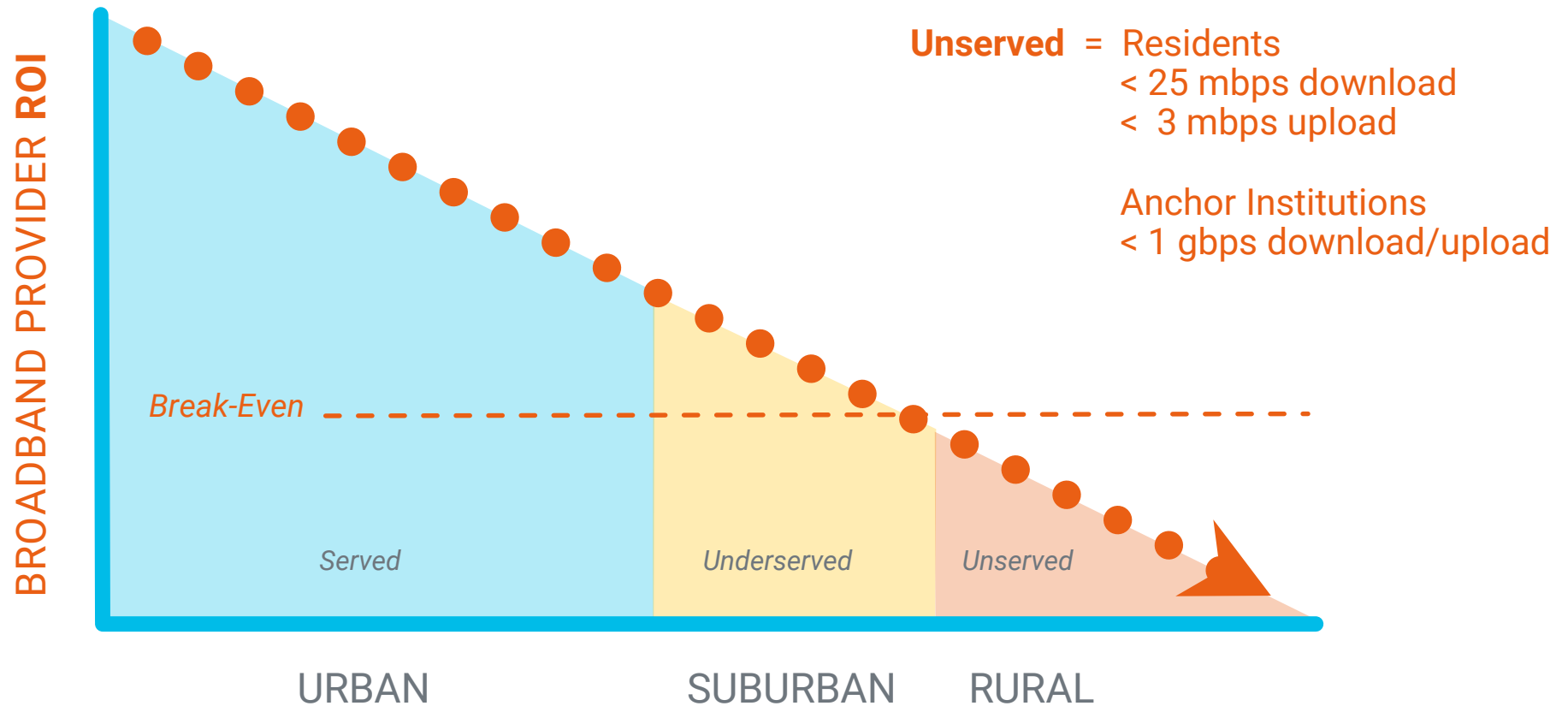


**CRIME VICTIMS &  
PUBLIC SAFETY**

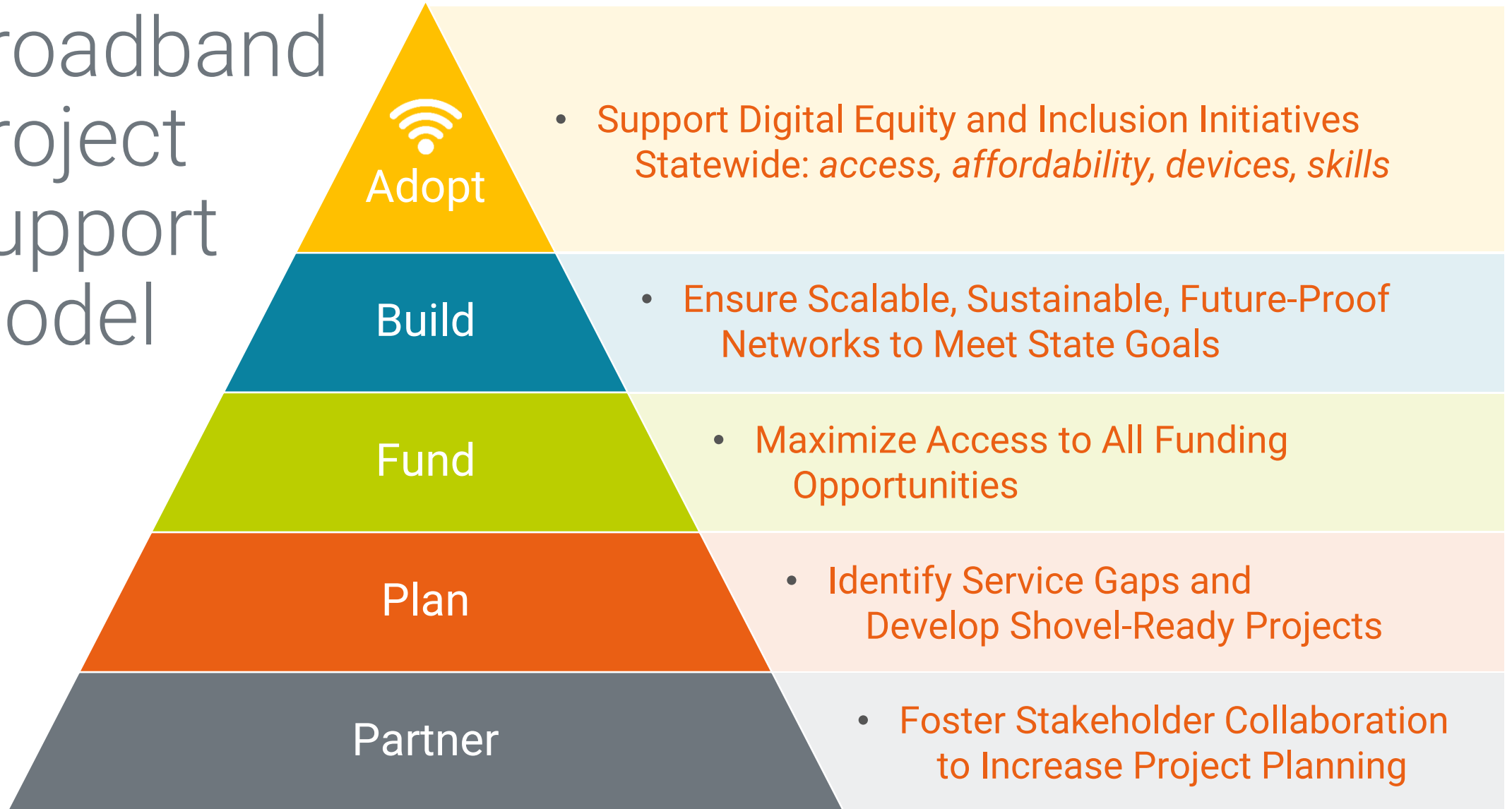


**COMMUNITY  
SERVICES**

# The Broadband Delivery Challenge



# Broadband Project Support Model



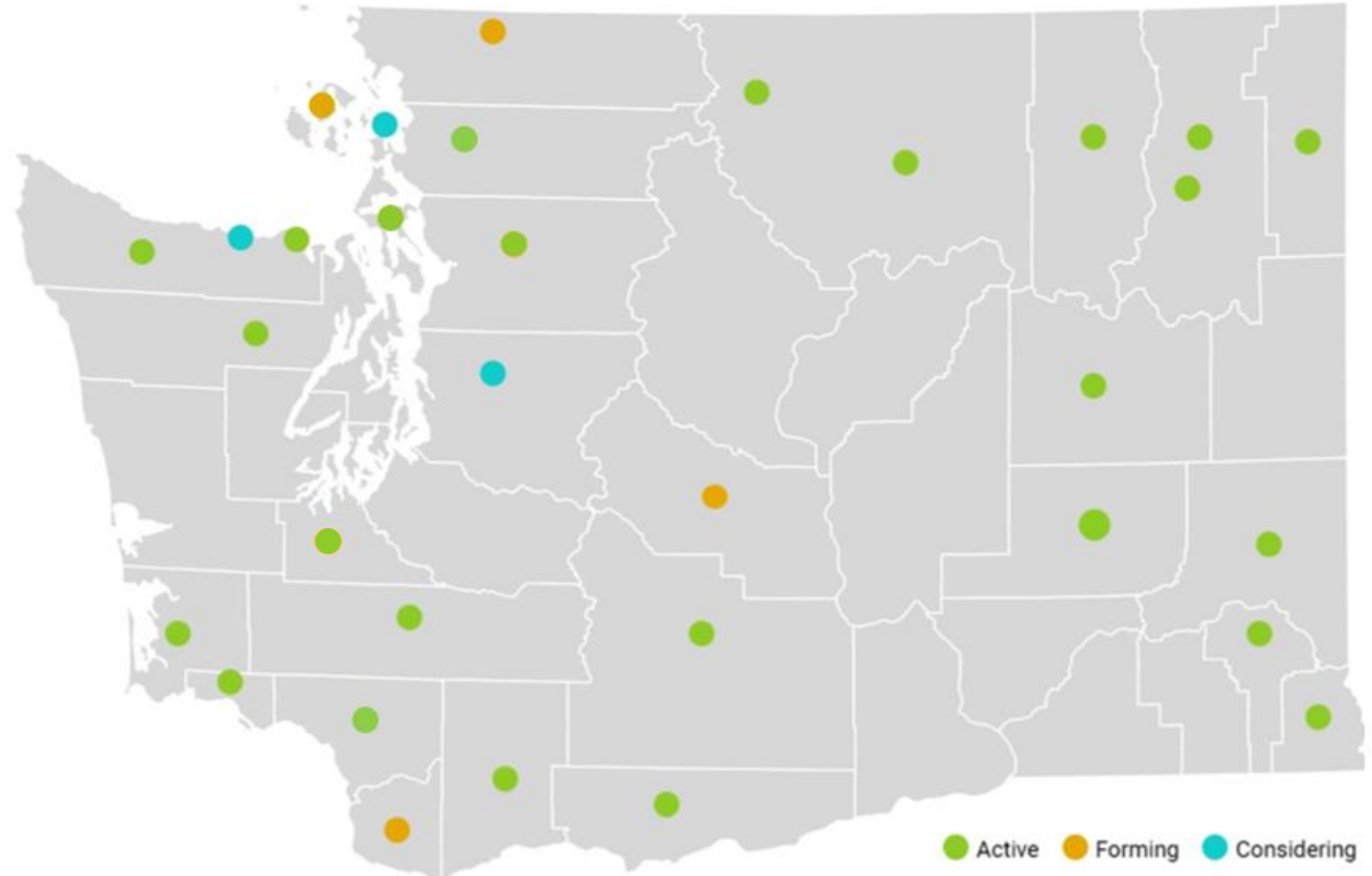


# Partner

Foster Stakeholder Collaboration to Increase Project Planning

## Broadband Action Teams

- Currently 32 Teams
- Promote **participation** in State Broadband Survey
- Identify **public-private** partnerships
- Identify **shovel-ready** projects
- Connect projects to **funding** opportunities





# Plan Identify Service Gaps and Develop Shovel-Ready Projects

## Broadband State and County Dashboards

### Download

• No Service	5.9%
• 0-10 Mbps	39.8%
• 10-25 Mbps	18.6%
• 25-150 Mbps	29.7%
• 150+ Mbps	6.0%

### Upload

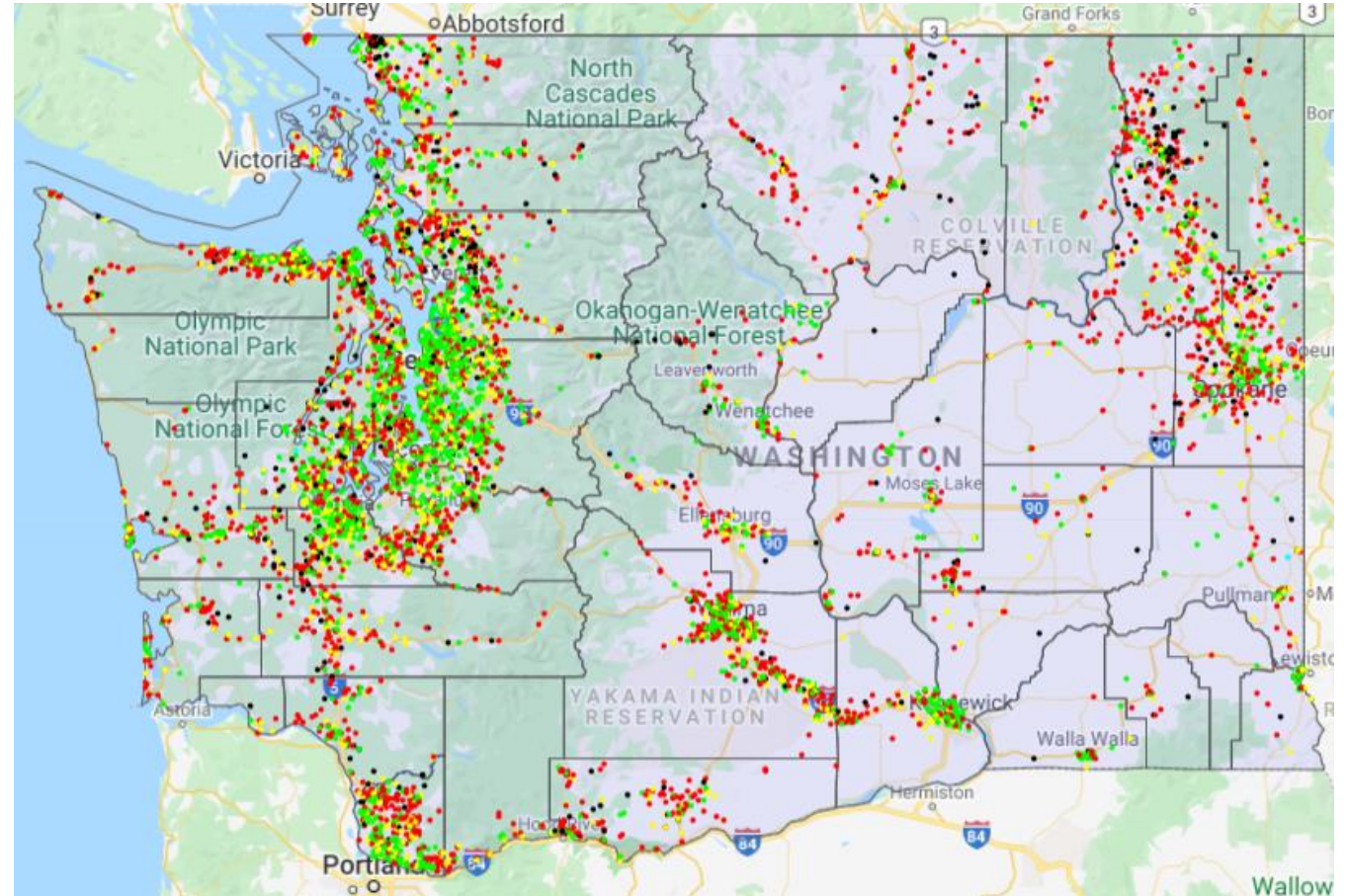
No Service	5.9%
<3 Mbps	42.3%
3-10 Mbps	30.1%
10-25 Mbps	15.7%
25-150 Mbps	5.1%
> 150 Mbps	0.9%

<b>Households</b>	2,885,677
<b>Population</b>	6,724,540
<b>Test locations</b>	38,043
<b>Total Tests</b>	49,573

### Reasons for No Service

*Respondents can select all that apply*

Too Expensive	17.17%
Not Available	91.02%
Use Public	0.16%
No Computer	1.64%
Don't Know How Internet	1.56%
Don't Know How Computer	0.47%
Don't Need	0.23%
Privacy	0.16%
Physical Issues	0.08%



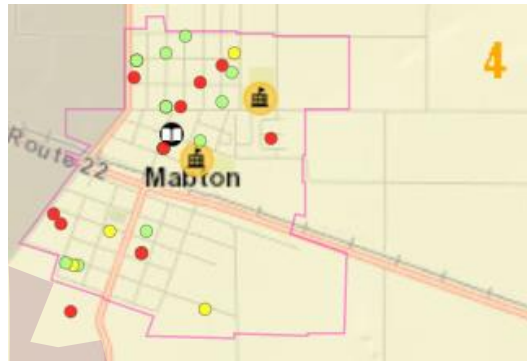


# Plan State Broadband MAP LAYERS

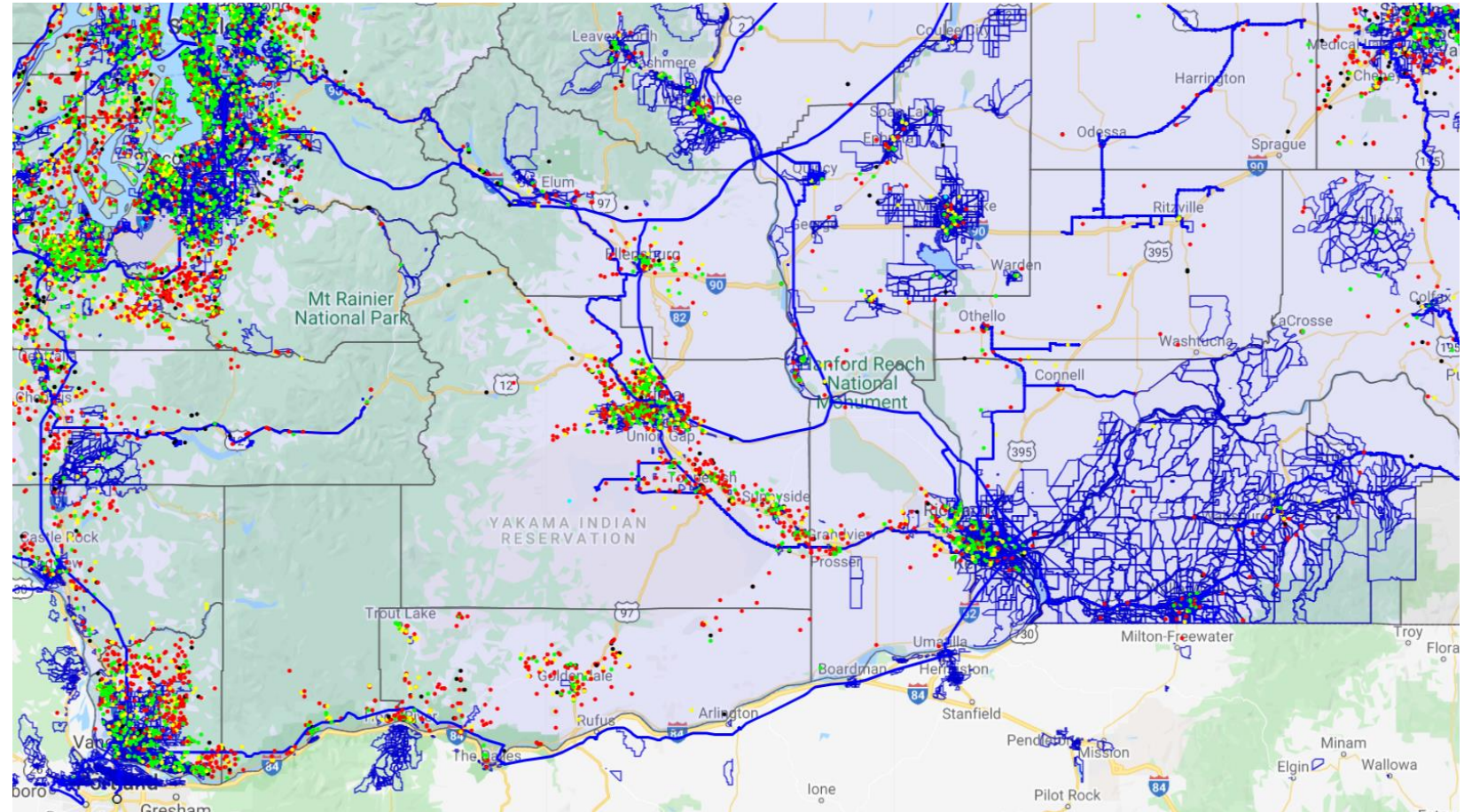
## Speeds

Up/Down/Ping/Jitter/  
Provider/Service type/Fee

## Fiber Routes



City Limits, Leg. Districts,  
County Boundaries,  
Tribal Lands, DNR Towers,  
RDOF, CAFII, Schools, Libraries





# Plan “Shovel-Ready” Projects

Project Name (Unserved)	Project Location	Project Cost	Number of Locations Served	Cost per Location	Can be Started By	Can be Completed By 12/31/24	Funds to Contribute (Y/N)
-------------------------	------------------	--------------	----------------------------	-------------------	-------------------	------------------------------	---------------------------

- **Demonstrated Unserved** (State Map)
- **Committed Build Partner**
- **A Plan, including**
  - Total Project Costs
  - Future-Proof Infrastructure
  - Logistics
  - Timing
  - Pricing Strategy
  - Sustainable Business Model
- **ARPA Funding**
  - Complete by 12/31/24
- **Preferred**
  - Rights-Of-Way
  - Permits Executed
  - Low-Income Program Service Options (ex. Lifeline)
  - Start Project within 6-12 Months





# Fund

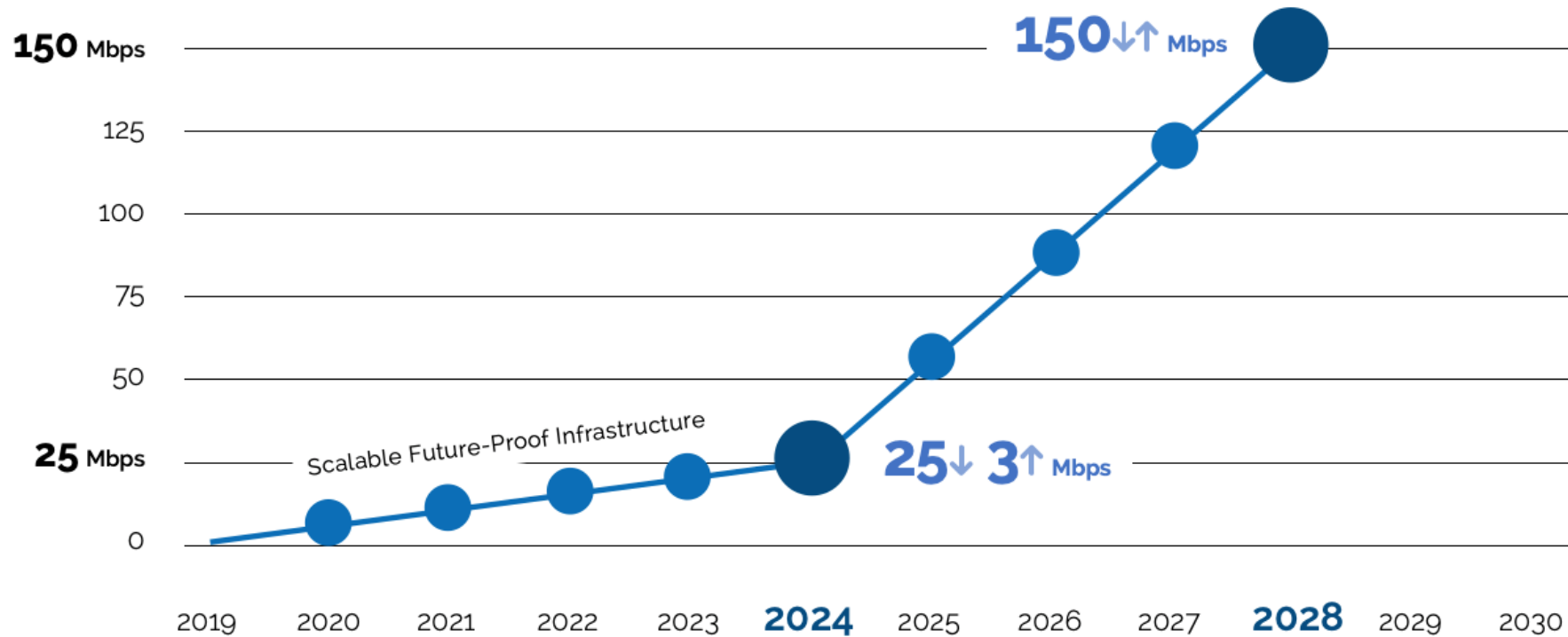
Maximize Access to All Funding Opportunities

- **USDA**
  - **ReConnect \$600M**
  - USDA Community Connect \$35M
  - USDA Distance Learning and Telemedicine Grants \$43M
  - USDA Rural Broadband Program \$29M
  - USDA Rural Telecommunications Infrastructure Loans \$690M
- **NTIA \$300M**
- **NTIA Tribal Broadband \$1B**
- **American Rescue Plan Act (ARPA) WA \$7.1B (Not broadband specific)**
- **Coronavirus Capital Projects Fund** Proposed \$10B
- **FCC**
  - FCC Rural Digital Opportunity Fund \$20B
  - FCC Connected Care \$100M
  - FCC COVID Telehealth \$200M
  - FCC E-Rate \$4B
  - FCC Connect America Fund \$1B
  - FCC Rural Healthcare Program \$571M
  - FCC Lifeline Program \$2B
- **USDOT BUILD Grant \$1B**
- **Institute of Museum and Library Services Library and Tribal Grants**
- **Department of Interior National Tribal Broadband Grant (NTBG) \$1M**
- **Economic Development Administration \$1B**
- **Accessible Affordable Internet for All Act**  
Proposed \$94B, \$6B enhances EBB Program
- **State:**
  - WSBO \$326M
  - PWB \$60M
  - CERB \$25M



# Build

Ensure Scalable, Sustainable, Future-Proof Networks to Meet State Goals



- **884,000 homes without fiber**  
Est. **\$2.5+B**
- **Anchor Institutions 1/1 Gbps by 2026**



# Adopt

Support Digital Equity and Inclusion Initiatives Statewide

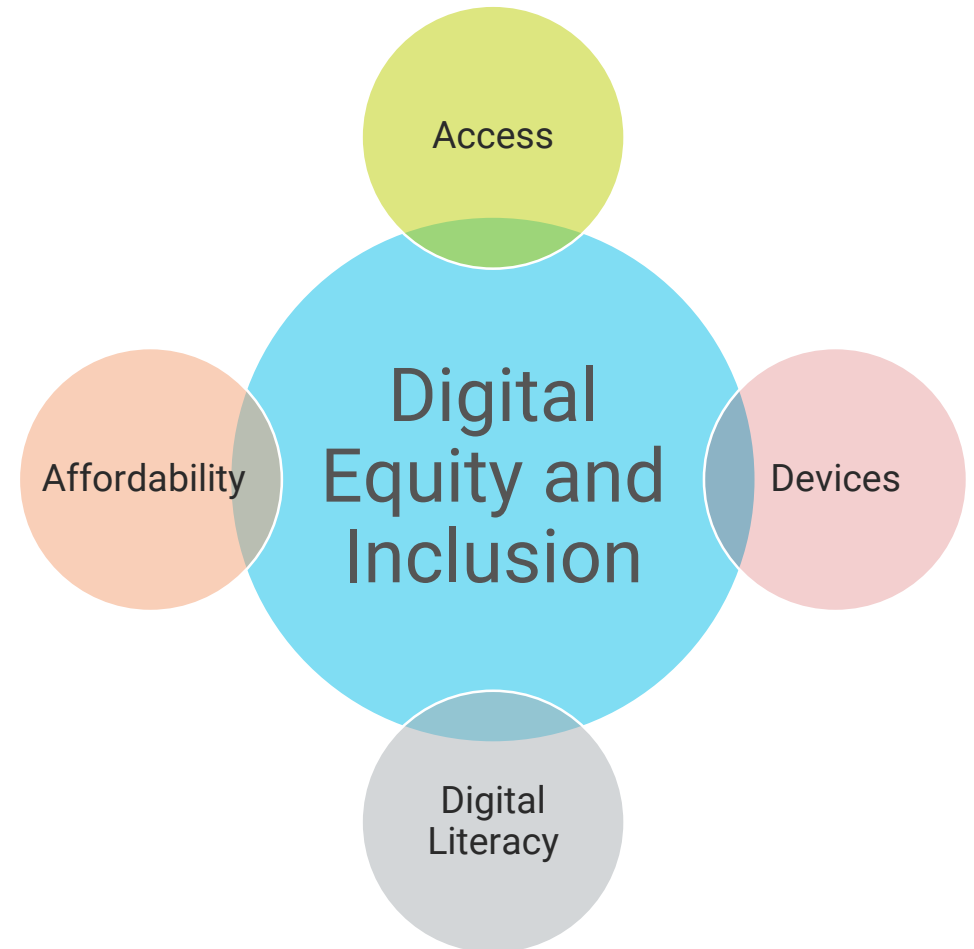
- **Policy guidance and centralized coordination with statewide DEI initiatives**

*Equity in Education Coalition, Human Centered Design Committee, DSHS, DOH, ESD, DCYF, State Board of Community and Technical Colleges, Health Care Authority, Digital Equity Taskforce, Poverty Reduction Work Group, Native Digital Equity Coalition, Remote Learning Taskforce, OSPI, Seattle Digital Equity, All In Washington, Washington State University, Washington State Library | SOS, Digital Navigators*

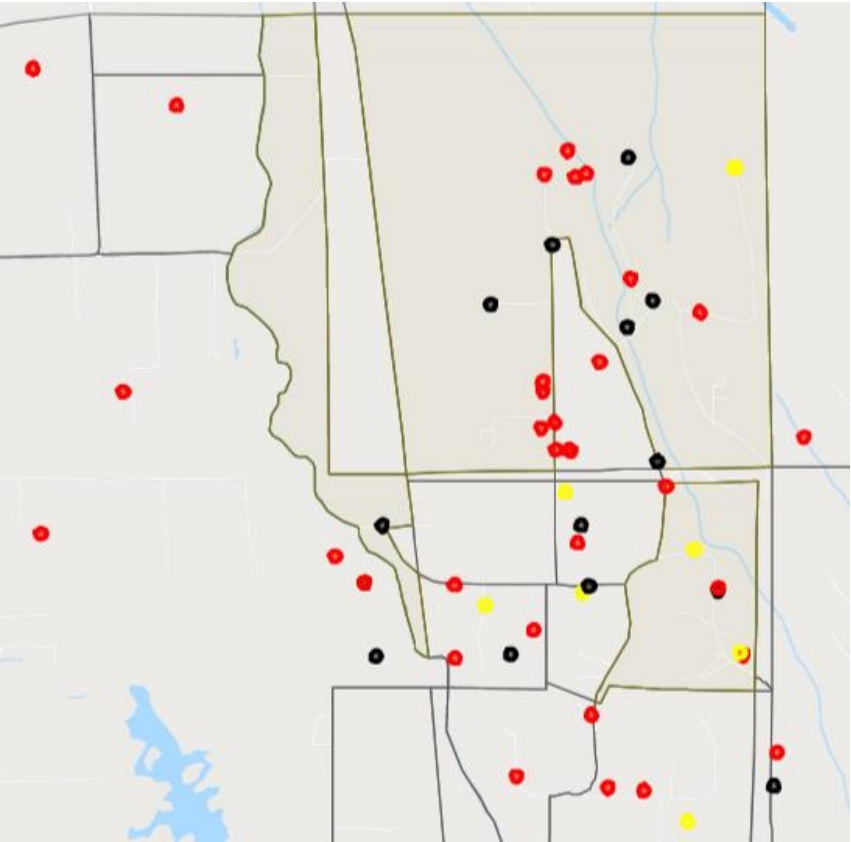
- **\$3.2B 2021 FCC Emergency Broadband Benefit Program**

- **\$5M for broadband equity and affordability grants**

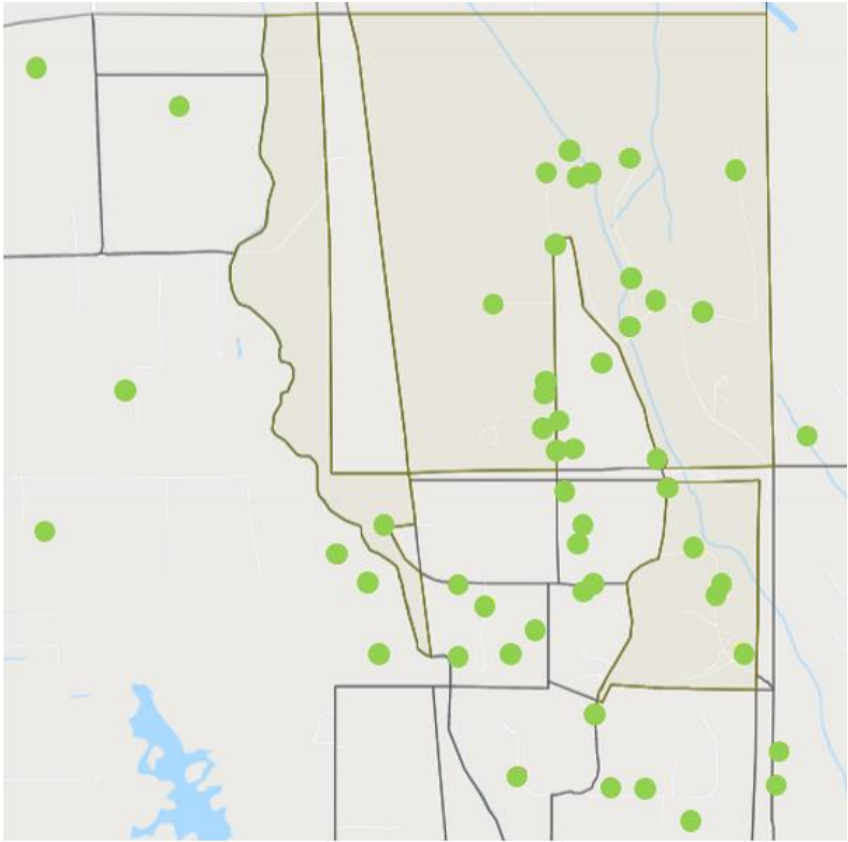
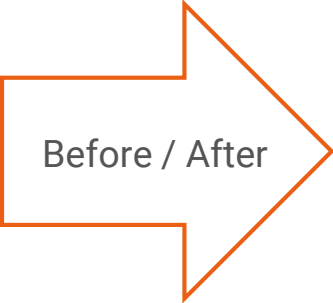
- **\$7.5M to provide grants to entities that provide digital navigator services, devices, and subscriptions**



# How Do We Measure Success?



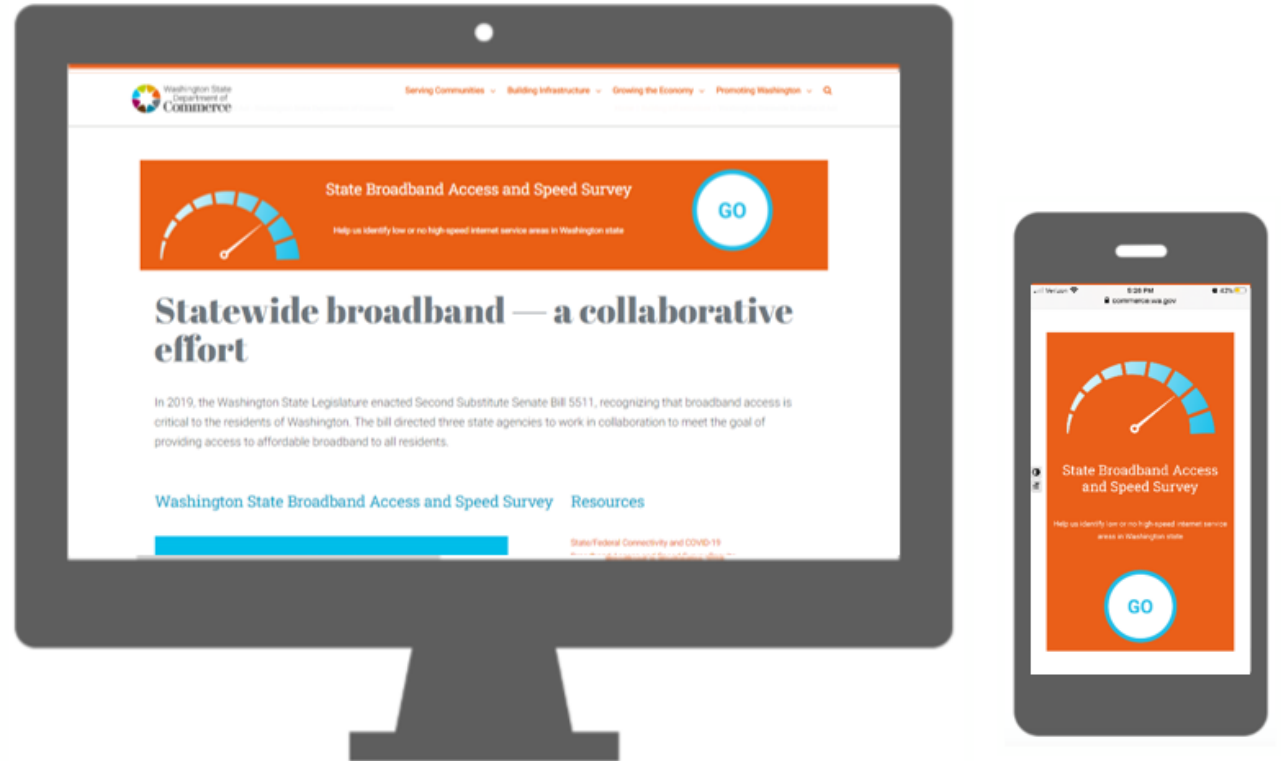
2020: Black - No Service Red < 10 Mbps Yellow < 25 Mbps



2024: Green > 25 Mbps Scalable to 2028: 150/150 Mbps

# Next Steps

- Promote **ongoing** participation in State Broadband Access and Speed Survey at **broadband.wa.gov**
- Identify and develop **shovel-ready projects** for funding applications



**“What gets  
measured gets  
done!”  
Thank you.**

Russ Elliott

DIRECTOR, WASHINGTON STATE BROADBAND OFFICE

[Russ.Elliott@commerce.wa.gov](mailto:Russ.Elliott@commerce.wa.gov)

564.999.0326



Washington State  
Department of  
**Commerce**

[www.commerce.wa.gov](http://www.commerce.wa.gov)

